



Please dispose of packaging for the product in a responsible manner. It is suitable for recycling. Help to protect the environment, take the packaging to the local amenity tip and place into the appropriate recycling bin.



Never dispose of electrical equipment or batteries in with your domestic waste. If your supplier offers a disposal facility please use it or alternatively use a recognised re-cycling agent. This will allow the recycling of raw materials and help protect the environment.

sip
SIP INDUSTRIAL

machinery specialists since 1968

Pillar Drill Range



01700 - 01708

**FOR HELP OR ADVICE ON THIS PRODUCT PLEASE CONTACT YOUR DISTRIBUTOR,
OR SIP DIRECTLY ON:
TEL: 01509500400
EMAIL: sales@sip-group.com or technical@sip-group.com
www.sip-group.com**

Ref: 050716

Please read and fully understand the instructions in this manual before operation. Keep this manual safe for future reference.

DECLARATION OF CONFORMITY

Declaration of Conformity
We
SIP (Industrial Products) Ltd
Gelders Hall Road
Shepshed
Loughborough
Leicestershire
LE12 9NH
England

As the manufacturer's authorised representative within the EC
declare that the

F32-20 Floor Pillar Drill 400v - SIP Part No. 01708

Conforms to the requirements of the following directive(s), as indicated.

2006/42/EC	Machinery Directive
2014/30/EU	EMC Directive
2011/65/EU	RoHS Directive

And the following harmonised standard(s), including:

EN 60204-1:2006+A1:2009
EN 12717:2001+A1:2009
EN 55014-1:2006+A2:2011
EN 55014-1:1997+A2:2008
EN 61000-3-2:2014
EN 61000-3-3:2013

Signed:



Mr P. Ippaso - Managing Director - SIP (Industrial Products) Ltd
Date: 16/05/2016.



DECLARATION OF CONFORMITY

Declaration of Conformity
We
SIP (Industrial Products) Ltd
Gelders Hall Road
Shepshed
Loughborough
Leicestershire
LE12 9NH
England

As the manufacturer's authorised representative within the EC
declare that the

B13-13 Bench Pillar Drill - SIP Part. No. 01700
B16-12 Bench Pillar Drill - SIP Part. No. 01701
B16-16 Bench Pillar Drill - SIP Part No. 01702
B20-16 Bench Pillar Drill - SIP Part No. 01703
F16-16 Floor Pillar Drill - SIP Part No. 01704
F20-16 Floor Pillar Drill - SIP Part No. 01705
F28-20 Floor Pillar Drill - SIP Part No. 01706
F32-20 Floor Pillar Drill 230v - SIP Part No. 01707
F32-20 Floor Pillar Drill 400v - SIP Part No. 01708

Conforms to the requirements of the following directive(s), as indicated.

2006/95/EC	Low Voltage Directive
2006/42/EC	Machinery Directive
2004/108/EC	EMC Directive
2011/65/EU	RoHS Directive

And the following harmonised standard(s), including:

EN 61029-1:+A11:2010
EN ISO 12100:2010
EN 60204-1+A1:2009
EN 12717+A1:2009
EN 55014-1+A2:2011
EN 55014-2+A2:2008
EN 61000-3-2+A2:2009
EN 61000-3-3:2008
EN 61000-3-11:2000

Signed:



Mr P. Ippaso - Managing Director - SIP (Industrial Products) Ltd
Date: 16/05/2016.



CONTENTS

Page No.	Description
4.	Safety Symbols Used Throughout This Manual
4.	Safety Instructions
8.	Technical Specifications
11.	Electrical Connection
13.	Guarantee
14.	Getting To Know Your Drill
16.	Assembly Instructions
21.	Operating Instructions
27.	Maintenance
28.	Troubleshooting
29.	Exploded Drawing - 01700
30.	Parts List - 01700
32.	Exploded Drawing - 01701
33.	Parts List - 01701
35.	Exploded Drawing - 01702
36.	Parts List - 01702
38.	Exploded Drawing - 01703
39.	Parts List - 01703
41.	Exploded Drawing - 01704
42.	Parts List - 01704
44.	Exploded Drawing - 01705
45.	Parts List - 01705
47.	Exploded Drawing - 01706
48.	Parts List - 01706
50.	Exploded Drawing - 01707
51.	Parts List - 01707
53.	Exploded Drawing - 01708
54.	Parts List - 01708
58.	Declaration of Conformity

SAFETY SYMBOLS USED THROUGHOUT THIS MANUAL



Danger / Caution: Indicates risk of personal injury and/or the possibility of damage.



Warning: Risk of electrical injury or damage!



Note: Supplementary information.

SAFETY INSTRUCTIONS



IMPORTANT: Please read the following instructions carefully, *failure to do so could lead to serious personal injury and / or damage to the drill.*

When using the pillar drill, basic safety precautions should always be followed to reduce the risk of fire, electric shock and personal injury.

Read all these instructions before operating the drill and save this user manual for future reference.

The pillar drill should **not** be modified or used for any application other than that for which it was designed.

It was designed to be fitted with a cutting tool attachment or driving tool attachment, usually a drill bit or driver bit, to be used for drilling holes in various materials.

If you are unsure of its relative applications do not hesitate to contact us and we will be more than happy to advise you.

KNOW YOUR PILLAR DRILL: Read and understand the owner's manual and labels affixed to the drill. Learn its applications and limitations, as well as the potential hazards specific to it.

KEEP WORK AREA CLEAN AND WELL LIT: Cluttered work benches and dark areas invite accidents. Floors must not be slippery due to oil, water or sawdust etc.

DO NOT USE THE DRILL IN DANGEROUS ENVIRONMENTS: Do not use the pillar drill in damp or wet locations, or expose it to rain. Provide adequate space surrounding the work area. Do not use in environments with a potentially explosive atmosphere.

KEEP CHILDREN AND UNTRAINED PERSONNEL AWAY FROM THE WORK AREA: All visitors should be kept at a safe distance from the work area.

NOTES

STORE THE PILLAR DRILL SAFELY WHEN NOT IN USE: The pillar drill should be stored in a dry, locked cupboard wherever possible and out of the reach of children.

WEAR THE CORRECT CLOTHING: Do not wear loose clothing, neckties, rings, bracelets, or other jewellery, which may get caught in moving parts. Non-slip footwear is recommended. Wear protective hair covering to contain long hair. Roll long sleeves up above the elbow.

USE SAFETY CLOTHING / EQUIPMENT: Wear CE approved safety goggles at all times, normal spectacles only have impact resistant lenses, they are **NOT** safety glasses. A face or dust mask should be worn if the operation is dusty and ear protectors (plugs or muffs) should be worn, particularly during extended periods of operation.

PROTECT YOURSELF FROM ELECTRIC SHOCK: When working with the pillar drill, avoid contact with any earthed items (e.g. pipes, radiators, hobs and refrigerators, etc.). It is advisable wherever possible to use an RCD (residual current device) at the mains socket.

STAY ALERT: Always watch what you are doing and use common sense. Do not operate the pillar drill when you are tired or under the influence of alcohol or drugs.

DISCONNECT THE PILLAR DRILL FROM THE MAINS SUPPLY: When not in use, before servicing and when changing accessories such as drill bits etc.

AVOID UNINTENTIONAL STARTING: Make sure the switch is in the **OFF** position before connecting the drill to the mains supply.

NEVER LEAVE THE DRILL RUNNING / CONNECTED WHILST UNATTENDED: Turn the drill off and disconnect it from the mains supply between jobs. Do not leave the drill until it comes to a complete stop.

DO NOT ABUSE THE MAINS LEAD: Never attempt to move the drill by the mains lead or pull it to remove the plug from the mains socket. Keep the mains lead away from heat, oil and sharp edges. If the mains lead is damaged, it must be replaced by the manufacturer or its service agent or a similarly qualified person in order to avoid unwanted hazards.

CHECK FOR DAMAGED PARTS: Before every use of the drill, a guard or other part that is damaged should be carefully checked to determine that it will operate correctly and perform its intended function. Check for alignment of moving parts, free running of moving parts, breakage of parts, and any other conditions that may affect its operation. A guard or other part that is damaged should be correctly repaired or replaced by an authorised service centre unless otherwise indicated in this instruction manual. Have defective switches replaced by an authorised service agent. Do not use the drill if the switch does not turn it on and off.

KEEP ALL GUARDS IN PLACE: And in full working order.

MAINTAIN THE PILLAR DRILL WITH CARE: Keep bits sharp and clean for the best and safest performance. Follow instructions for lubricating and changing accessories. All extension cables must be checked at regular intervals and replaced if damaged. Always keep the hand grip/s on the drill clean, dry and free of oil and grease.

USE ONLY RECOMMENDED ACCESSORIES: Consult this user manual, your distributor or SIP directly for recommended accessories. Follow the instructions that accompany the

SAFETY INSTRUCTIONS...cont

accessories. The use of improper accessories may cause hazards and will invalidate any warranty you may have.

REMOVE ADJUSTING KEYS AND WRENCHES: Form a habit of checking to see that keys and adjusting wrenches are removed from the drill before every use.

SECURE THE WORKPIECE: Use clamps or a vice to hold the workpiece. This frees up both hands to operate the pillar drill.

DO NOT OVERREACH: Keep proper footing and balance at all times.

USE THE RIGHT TOOL: Do not use the drill or attachment to do a job for which it was not designed.

DO NOT FORCE THE PILLAR DRILL: It will do the job better and more safely at the rate which it was designed.

DO NOT OPERATE THE PILLAR DRILL IN EXPLOSIVE ATMOSPHERES: Do not use the drill in the presence of flammable liquids, gases, dust or other combustible sources. Drilling operations may create sparks which can ignite the dust or fumes.

DO NOT EXPOSE THE PILLAR DRILL TO RAIN OR USE IT IN WET CONDITIONS: Water entering pillar drill will greatly increase the risk of electric shock.

HAVE YOUR PILLAR DRILL REPAIRED BY A QUALIFIED PERSON: The tool is in accordance with the relevant safety requirements. Repairs should only be carried out by qualified persons using original spare parts, otherwise this may result in considerable danger to the user.

DO NOT dismantle, tamper with or use the drill without all guards fitted as this may be dangerous and will invalidate the warranty.

- Keep hands away from the path of the drill bit, never reach around the drill bit.
- Make sure the drill bit is clear of the workpiece before the switch is turned on.
- Allow the drill bit to run up to full speed before drilling.
- Stop operation immediately if you notice anything abnormal.
- Wait for the drill bit to stop completely and remove the plug from mains supply before servicing or adjusting the drill or changing bits.
- Be alert at all times, especially during repetitive, monotonous operations. Don't be lulled into a false sense of security. Drill bits can be extremely unforgiving.
- Use of improper accessories may cause damage to the drill and surrounding area as well as increasing the risk of injury.
- Turn off the drill and wait for it to completely stop before moving workpiece or changing settings or bits etc.
- Do not modify the pillar drill to do tasks other than those intended.
- When drilling, particularly hard items such as metal, use clamps to hold the workpiece; To avoid injury, the work should never be held with the bare hands.
- Secure the base of the drill to a work bench or the floor before using the pillar drill. If the work is heavy or large and likely to cause the drill to tip over, use additional supports as appropriate under and around the workpiece.

PARTS LIST - 01708...cont

Ref. No.	Description	SIP Part No.	Ref. No.	Description	SIP Part No.
67.	Nut M5	WD01-00697	92.	Nut	WD02-00380
68.	Microswitch holder	WD01-00709	93.	Washer M6	WD01-00702
69.	Washer M6	WD01-00702	94.	Screw (M6 x 12)	WD02-00381
70.	Spring washer M6	WD01-00707	95.	Screw (10 x25)	WD02-00382
71.	Nut M6	WD01-00710	96.	Casting	WD02-00383
72.	Cam assembly	WD02-00368	97.	Spindle pulley	WD02-00384
73.	Screw (M5 x 16)	WD01-00838	98.	Key	WD02-00385
74.	Washer	WD01-00881	99.	Spindle shaft	WD02-00386
75.	Protecting ring	WD01-00839	100.	Bearing 6007	WD02-00387
76.	Pulley cover	WD02-00369	101.	Ring	WD02-00388
77.	Washer M8	WD01-00672	102.	Circlip	WD02-00389
78.	Bolt (M8 x 10)	WD02-00370	103.	Screw (M4 x 60)	WD02-00434
79.	Clamp	WD02-00371	104.	Spring washer (M4)	WD02-00435
80.	Overload 5A	WD02-00432	105.	Washer (M4)	WD02-00436
81.	Lock washer	WD02-00433	106.	Washer	WD02-00437
82.	Eccentric shaft	WD02-00374	107.	Quill	WD02-00393
83.	Centre pulley	WD02-00375	108.	Bearing 51107	WD02-00394
84.	Bearing 6202	WD01-00771	109.	Spindle	WD02-00395
85.	Circlip	WD01-00831	110.	Arbor MT4	17823
86.	Belt A686	WD02-00376	111.	Chuck	WD02-00396
87.	Protecting ring	WD01-00770	112.	Chuck guard 75mm	68328
88.	Clamp	WD02-00377	113.	Drift key	WD01-00862
89.	Mains lead	WD01-00720	114.	Switch	WD02-00430
90.	Tension spring	WD02-00378	115.	Label	WD02-00438
91.	Tension spring cover	WD02-00379	116.	Switch box	WD02-00439

PARTS LIST - 01708

Ref. No.	Description	SIP Part No.	Ref. No.	Description	SIP Part No.
1.	Base	WD02-00329	34.	Lock handle	WD02-00352
2.	Column flange	WD02-00330	35.	Label	WD02-00353
3.	Spring washer M10	WD01-00795	36.	Connection	WD02-00354
4.	Bolt (M10 x 35)	WD02-00331	37.	Pinion shaft	WD02-00355
5.	Crank handle	WD02-00332	38.	Indicator	WD01-00897
6.	Bolt (M6 x 12)	WD01-00905	39.	Screw	WD02-00356
7.	Circlip	WD01-00742	40.	Roll pin (5 x 25)	WD01-00869
8.	Worm shaft	WD02-00333	41.	Screw (M10 x 10)	WD02-00345
9.	Table support	WD02-00334	42.	Bearing 6005	WD01-00889
10.	Worm pin	WD02-00335	43.	Warning label	WD01-00685
11.	Table	WD02-00431	44.	Roll pin (6 x 18)	WD01-00760
12.	Spring washer M20	WD02-00337	45.	Belt tension handle	WD02-00358
13.	Bolt (M20 x 55)	WD02-00338	46.	Lock handle	WD02-00359
14.	Indicator	WD01-00897	47.	Circlip	WD01-00816
15.	Lock handle	WD02-00339	48.	Circlip	WD01-00871
16.	Angle label	WD02-00340	49.	Adjusting shaft	WD01-00872
17.	Worm gear	WD02-00341	50.	Shaft	WD02-00360
18.	Column	WD02-00342	51.	Washer M12	WD01-00819
19.	Rack	WD02-00343	52.	Washer M10	WD02-00361
20.	Hex. wrench 3mm	WD01-00790	53.	Nut M8	WD01-00687
21.	Hex. wrench 4mm	WD01-00737	54.	Motor plate	WD02-00362
22.	Screw (M10 x 10)	WD02-00345	55.	Bolt (M8 x 30)	WD02-00363
23.	Hex. wrench M5	WD02-00397	56.	Spring washer M12	WD01-00676
24.	Hex. wrench M6	WD01-00861	57.	Nut M12	WD01-00821
25.	Rack collar	WD02-00346	58.	Motor	WD02-00428
26.	Screw (M6 x 12)	WD01-00740	59.	Grub screw (M8 x 10)	WD01-00689
27.	Handle knob	WD02-00347	60.	Motor pulley	WD02-00365
28.	Screw (M6 x 12)	WD01-00740	61.	Motor pulley key	WD02-00366
29.	Handle cap	WD02-00349	62.	Nut M10	WD01-00717
30.	Screw (M8 x 20)	WD01-00801	63.	Belt A787	WD02-00367
31.	Spring washer M8	WD01-00673	64.	Microswitch	WD01-00706
32.	Handle	WD02-00350	65.	Washer M5	WD01-00881
33.	Scale	WD02-00351	66.	Spring washer M5	WD01-00882

SAFETY INSTRUCTIONS...cont

- Remove the key from the chuck after adjustment.
- Use only the chuck key provided by the manufacturer or a duplicate of it.
- Appropriate personal protective equipment **MUST** be worn and **MUST** be designed to protect against all hazards created. Severe permanent injury can result from using inappropriate or insufficient protective equipment - Eyes in particular are at risk.
- Do not overload the tool. Allow the tool to operate at its optimum speed for maximum efficiency.
- Always ensure that the accessories such as drill bits, as well as the drill are rated / designed for use with required application, and are the bits are correctly and securely fastened before connecting the tool to the mains supply.
- The work must be clamped firmly while drilling. Any tilting, twisting or shifting results not only in a rough hole but also increases the hazard, which could result in injury or drill breakage. For flat work lay the piece on a wooden base and clamp it firmly down against the table to prevent it from turning. If the piece is of irregular shape and cannot be laid flat on the table, it should be securely blocked and clamped.
- **Understand the operating environment;** Before each use the operator should assess, understand and where possible reduce the specific risks and dangers associated with the operating environment. Bystanders should also be made aware of any risks associated with the operating environment.



When using the pillar drill for certain operations, particularly during extended periods; ensure the operator as well as those in the area wear ear protection.



When using the pillar drill always ensure the operator as well as those in the area wear eye protection.



Some materials have the potential to be highly toxic; always wear a face mask when operating the pillar drill.

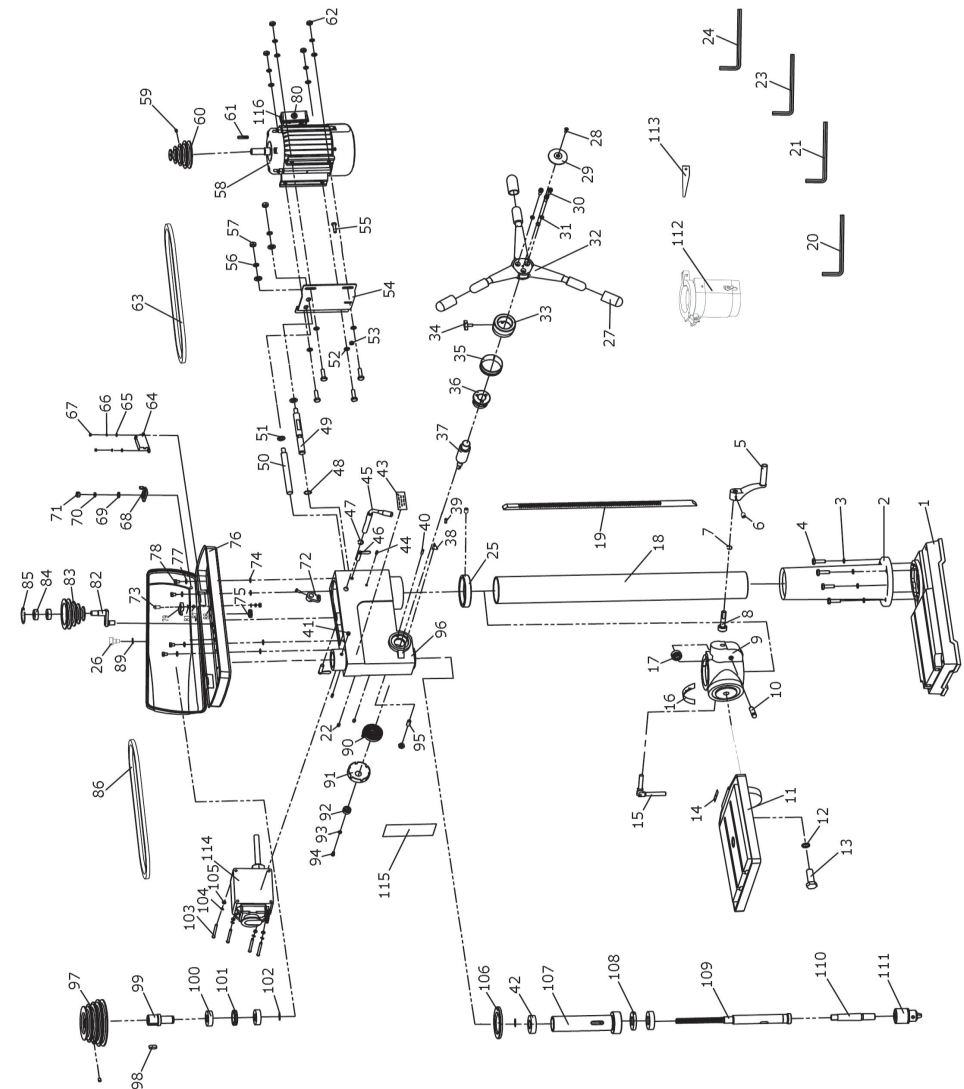


CAUTION: The warnings and cautions mentioned in this user manual can not cover all possible conditions and situations that may occur. It must be understood by the operator that common sense and caution are factors which cannot be built into this product, but must be applied.

TECHNICAL SPECIFICATIONS

Part number	01700	01701	01702
Model	B13-13	B16-12	B16-16
Input Voltage	230v ~ 50hz	230v ~ 50hz	230v ~ 50hz
Power	350 w	375 w	375 w
Speed Range	620-2620 rpm	300-2550 rpm	180-2770 rpm
Number of Speeds	5	12	16
Drill Bit Size	1.5-13 mm	3-16 mm	3-16 mm
Max. Drilling Capacity (mild Steel)	13 mm	16 mm	16 mm
Spindle Taper	B16	B16	MT2
Table Size	160 x 160 mm	202 x 195 mm	Ø 290 mm
Base Size	290 x 190 mm	340 x 210 mm	415 x 245 mm
Column Ø	46 mm	58 mm	72 mm
Swing	210 mm	260 mm	325 mm
Height	580 mm	840 mm	980 mm
Spindle Travel	50 mm	60 mm	80 mm
Collar Ø	40 mm	40 mm	55 mm
Max. Distance Chuck to Table	220 mm	405 mm	450 mm
Max. Distance Chuck to Base	300 mm	515 mm	630 mm
Net Weight	14.7 Kg	27 Kg	38 Kg
Gross Weight	16.7 Kg	29 Kg	40 Kg

EXPLODED DRAWING - 01708



PARTS LIST - 01707....cont

Ref. No.	Description	SIP Part No.	Ref. No.	Description	SIP Part No.
69.	Washer M6	WD01-00702	94.	Screw (M6 x 12)	WD02-00381
70.	Spring washer M6	WD01-00707	95.	Screw (10 x25)	WD02-00382
71.	Nut M6	WD01-00710	96.	Casting	WD02-00383
72.	Cam assembly	WD02-00368	97.	Spindle pulley	WD02-00384
73.	Screw (M5 x 16)	WD01-00838	98.	Key	WD02-00385
74.	Washer	WD01-00881	99.	Spindle shaft	WD02-00386
75.	Protecting ring	WD01-00839	100.	Bearing 6007	WD02-00387
76.	Pulley cover	WD02-00369	101.	Ring	WD02-00388
77.	Washer M8	WD01-00672	102.	Circlip	WD02-00389
78.	Bolt (M8 x 10)	WD02-00370	103.	Switch box	WD02-00390
79.	Clamp	WD02-00371	104.	Switch	WD01-00895
80.	Circlip	WD02-00372	105.	Screw (ST3.2 x 12)	WD02-00391
81.	Knurled screw	WD02-00373	106.	Washer	WD02-00392
82.	Eccentric shaft	WD02-00374	107.	Quill	WD02-00393
83.	Centre pulley	WD02-00375	108.	Bearing 51107	WD02-00394
84.	Bearing 6202	WD01-00771	109.	Spindle	WD02-00395
85.	Circlip	WD01-00831	110.	Arbor MT4	17823
86.	Belt A686	WD02-00376	111.	Chuck	WD02-00396
87.	Protecting ring	WD01-00770	112.	Chuck guard 75mm	68328
88.	Clamp	WD02-00377	113.	Drift key	WD01-00862
89.	Mains lead	WD01-00720	114.	Hex. wrench 3mm	WD01-00790
90.	Tension spring	WD02-00378	115.	Hex. wrench 4mm	WD01-00737
91.	Tension spring cover	WD02-00379	116.	Hex. wrench 5mm	WD02-00397
92.	Nut	WD02-00380	117.	Hex. wrench 6mm	WD01-00861
93.	Washer M6	WD01-00702			

TECHNICAL SPECIFICATIONS....cont

Part number	01703	01704	01705
Model	B20-16	F16-16	F20-16
Input Voltage	230v ~ 50hz	230v ~ 50hz	230v ~ 50hz
Power	550 w	375 w	550 w
Speed Range	180-2770 rpm	180-2770 rpm	180-2770 rpm
Number of Speeds	16	16	16
Drill Bit Size	3-16 mm	3-16 mm	3-16 mm
Max. Drilling Capacity (mild Steel)	16 mm	16 mm	16 mm
Spindle Taper	MT2	MT2	MT2
Table Size	290 x 290 mm	250 x 250 mm	290 x 290 mm
Base Size	462 x 274 mm	450 x 265 mm	450 x 265 mm
Column Ø	72 mm	72 mm	72 mm
Swing	360 mm	325 mm	360 mm
Height	990 mm	1550 mm	1565 mm
Spindle Travel	83 mm	80 mm	83 mm
Collar Ø	55 mm	55 mm	55 mm
Max. Distance Chuck to Table	405 mm	725 mm	682 mm
Max. Distance Chuck to Base	600 mm	1205 mm	1174 mm
Net Weight	50 Kg	47 Kg	53 Kg
Gross Weight	52 Kg	50 Kg	57 Kg

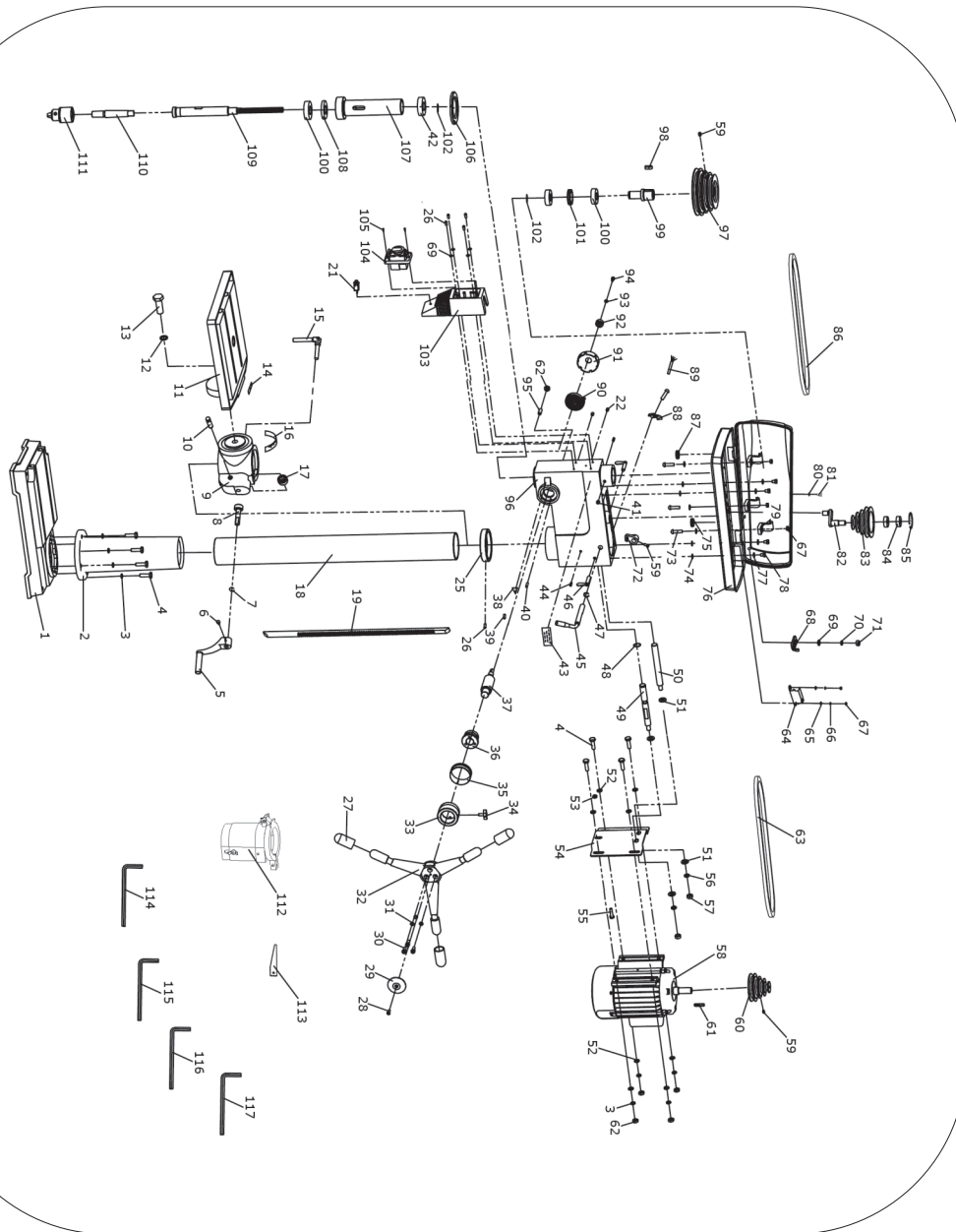
TECHNICAL SPECIFICATIONS...cont

Part number	01706	01707	01708
Model	F28-20	F32-20	F32-20
Input Voltage	230v ~ 50hz	230v ~ 50hz	400v ~ 50hz
Power	750 w	1100 w	1100 w
Speed Range	280-2380 rpm	150-2450 rpm	180-2500 rpm
Number of Speeds	12	12	12
Drill Bit Size	5-20 mm	5-20 mm	5-20 mm
Max. Drilling Capacity (mild Steel)	25 mm	32 mm	32 mm
Spindle Taper	MT3	MT4	MT4
Table Size	290 x 290 mm	420 x 470 mm	415 x 470 mm
Base Size	460 x 272 mm	573 x 427 mm	565 x 425 mm
Column Ø	80 mm	92 mm	92 mm
Swing	360 mm	510 mm	510 mm
Height	1600 mm	1722 mm	1730 mm
Spindle Travel	82.5 mm	120 mm	120 mm
Collar Ø	65 mm	75 mm	75 mm
Max. Distance Chuck to Table	687 mm	726 mm	735 mm
Max. Distance Chuck to Base	1177 mm	1204 mm	1205 mm
Net Weight	60 Kg	117 kg	115 kg
Gross Weight	64 Kg	122 kg	122 kg

PARTS LIST - 01707

Ref. No.	Description	SIP Part No.	Ref. No.	Description	SIP Part No.
1.	Base	WD02-00329	36.	Connection	WD02-00354
2.	Column flange	WD02-00330	37.	Pinion shaft	WD02-00355
3.	Spring washer M10	WD01-00795	38.	Indicator	WD01-00897
4.	Bolt (M10 x 35)	WD02-00331	39.	Screw	WD02-00356
5.	Crank handle	WD02-00332	40.	Roll pin (5 x 25)	WD01-00869
6.	Bolt (M6 x 12)	WD01-00905	41.	Screw	WD02-00357
7.	Circlip	WD01-00742	42.	Bearing 6005	WD01-00889
8.	Worm shaft	WD02-00333	43.	Warning label	WD01-00685
9.	Table support	WD02-00334	44.	Roll pin (6 x 18)	WD01-00760
10.	Worm pin	WD02-00335	45.	Belt tension handle	WD02-00358
11.	Table	WD02-00336	46.	Lock handle	WD02-00359
12.	Spring washer M20	WD02-00337	47.	Circlip	WD01-00816
13.	Bolt (M20 x 55)	WD02-00338	48.	Circlip	WD01-00871
14.	Indicator	WD01-00897	49.	Adjusting shaft	WD01-00872
15.	Lock handle	WD02-00339	50.	Shaft	WD02-00360
16.	Angle label	WD02-00340	51.	Washer M12	WD01-00819
17.	Worm gear	WD02-00341	52.	Washer M10	WD02-00361
18.	Column	WD02-00342	53.	Nut M8	WD01-00687
19.	Rack	WD02-00343	54.	Motor plate	WD02-00362
20.	Screw (M4 x 10)	WD01-00783	55.	Bolt (M8 x 30)	WD02-00363
21.	Overload	WD02-00344	56.	Spring washer M12	WD01-00676
22.	Screw (M10 x 10)	WD02-00345	57.	Nut M12	WD01-00821
25.	Rack collar	WD02-00346	58.	Motor	WD02-00364
26.	Screw (M6 x 12)	WD01-00740	59.	Grub screw (M8 x 10)	WD01-00689
27.	Handle knob	WD02-00347	60.	Motor pulley	WD02-00365
28.	Screw (M6 x 12)	WD02-00348	61.	Motor pulley key	WD02-00366
29.	Handle cap	WD02-00349	62.	Nut M10	WD01-00717
30.	Screw (M8 x 20)	WD01-00801	63.	Belt A787	WD02-00367
31.	Spring washer M8	WD01-00673	64.	Microswitch	WD01-00706
32.	Handle	WD02-00350	65.	Washer M5	WD01-00881
33.	Scale	WD02-00351	66.	Spring washer M5	WD01-00882
34.	Lock handle	WD02-00352	67.	Nut M5	WD01-00697
35.	Label	WD02-00353	68.	Microswitch holder	WD01-00709

EXPLODED DRAWING - 01707



ELECTRICAL CONNECTION

WARNING! It is the responsibility of the owner and the operator to read, understand and comply with the following:

You must check all electrical products, before use, to ensure that they are safe. You must inspect power cables, plugs, sockets and any other connectors for wear or damage.

You must ensure that the risk of electric shock is minimised by the installation of appropriate safety devices; A residual current circuit Breaker (RCCB) should be incorporated in the main distribution board. We also recommend that a residual current device (RCD) is used. It is particularly important to use an RCD with portable products that are plugged into a supply which is not protected by an RCCB. If in any doubt consult a qualified electrician.

Connecting to the power supply:

These SIP drills (01700-01707) are fitted with a standard 230v ~ 13 amp type plug. Before using the drill, inspect the mains lead and plug to ensure that neither are damaged. If any damage is visible have the drill inspected / repaired by a suitably qualified person. If it is necessary to replace the plug a heavy duty impact resistant plug would be preferable.

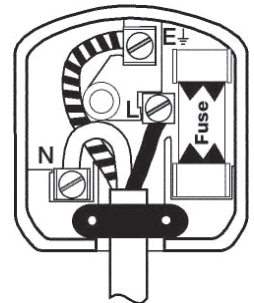
The wires for the plug are coloured in the following way:

Yellow / green	Earth
Blue	Neutral
Brown	Live

As the colours of the wires may not correspond with the markings in your plug, proceed as follows: The wire which is coloured blue, must be connected to the terminal marked with N or coloured black. The wire which is coloured brown, must be connected to the terminal, which is marked L or coloured red. The wire which is coloured yellow / green should be connected to the terminal which is coloured the same or marked



Always secure the wires in the plug terminal carefully and tightly. Secure the cable in the cord grip carefully.



ELECTRICAL CONNECTION...cont

3PH Wiring: 01708 only.

WARNING! It is the responsibility of the owner and the operator to read, understand and comply with the following:

You must check all electrical products, before use, to ensure that they are safe.

You must inspect power cables, plugs, sockets and any other connectors for wear or damage.

You must ensure that the risk of electric shock is minimised by the installation of appropriate safety devices; A residual current circuit Breaker (RCCB) should be incorporated in the main distribution board. We also recommend that a residual current device (RCD) is used. It is particularly important to use an RCD with portable products that are plugged into a supply which is not protected by an RCCB. If in any doubt consult a qualified electrician.

Connecting to the power supply:

The SIP 01708 F32-20 pillar drill requires 400v 50hz supply. Before each use, inspect the mains lead and plug (where applicable) to ensure that neither are damaged. If any damage is visible have the pillar drill inspected / repaired by a suitably qualified person. If it is necessary to replace the plug a heavy duty impact resistant plug would be preferable.

The wires for the plug are coloured in the following way:

Yellow / green	Earth
Blue/Grey	Phase
Brown	Phase
Black	Phase

Always secure the wires in the plug terminal carefully and tightly. Secure the cable in the cord grip carefully.



Warning: Never connect live, neutral or any phase wires to the earth terminal of the plug. Only fit an approved plug with the correct rated fuse. If in doubt consult a qualified electrician.



Warning: Always use a qualified electrician to wire in the 3ph pillar drill, never wire the pillar drill without any knowledge of electrics, this is extremely dangerous and will cause personal injury or even death.

PARTS LIST - 01706...cont

Ref. No.	Description	SIP Part No.	Ref. No.	Description	SIP Part No.
68.	Circlip	WD01-00713	98.	Spring washer M16	WD01-00853
69.	Spindle shaft	WD02-00309	99.	Lock handle	WD02-00322
70.	Bearing 6005	WD01-00889	100.	Worm pin	WD02-00323
71.	Bearing ring	WD02-00191	101.	Table support	WD02-00324
72.	Screw (M8 x 25)	WD01-00891	102.	Bolt (M6 x 12)	WD01-00905
73.	Castling	WD02-00311	103.	Crank handle	WD02-00325
74.	Label	WD02-00312	104.	Circlip	WD01-00742
75.	Lock washer	WD01-00725	105.	Worm shaft	WD02-00207
76.	Clip	WD01-00724	106.	Worm gear	WD02-00208
77.	Screw (M5 x 6)	WD01-00894	107.	Locking handle	WD01-00852
78.	Tension spring	WD02-00313	108.	Angle label	WD02-00328
79.	Tension spring cover	WD02-00314	109.	Lamp socket	WD01-00837
80.	Nut M12	WD01-00821	110.	Chuck guard 65mm	07664
81.	Switch box	WD02-00315	111.	Drift key	WD01-00862
82.	Switch	WD01-00895	112.	Hex. wrench 4mm	WD01-00737
83.	Screw (M3 x 10)	WD01-00896	113.	Hex. wrench 6mm	WD01-00861
84.	Mains lead clamp	WD01-00700	100.	Worm pin	WD02-00323
85.	Mains lead	WD01-00720	101.	Table support	WD02-00324
86.	Indicator	WD01-00897	102.	Bolt (M6 x 12)	WD01-00905
87.	Circlip	WD01-00787	103.	Crank handle	WD02-00325
88.	Bearing 6203	WD01-00714	104.	Circlip	WD01-00742
89.	Quill	WD02-00316	105.	Worm shaft	WD02-00207
90.	Spindle	WD02-00317	106.	Worm gear	WD02-00208
91.	Bearing 6006	WD01-00900	107.	Locking handle	WD01-00852
92.	Washer	WD01-00901	108.	Angle label	WD02-00328
93.	Arbor	WD02-00318	110.	Chuck guard 65mm	07664
94.	Chuck	WD02-00319	111.	Drift key	WD01-00862
95.	Table	WD02-00320	112.	Hex. wrench 4mm	WD01-00737
96.	Table arm	WD02-00321	113.	Hex. wrench 6mm	WD01-00861
97.	Bolt (M16 x 30)	WD01-00854			

PARTS LIST - 01706

Ref. No.	Description	SIP Part No.	Ref. No.	Description	SIP Part No.
1.	Base	WD02-00284	34.	Washer M8	WD01-00672
2.	Column flange	WD02-00285	35.	Motor plate	WD02-00296
3.	Spring washer M10	WD01-00795	36.	Spring washer M12	WD01-00676
4.	Bolt (M10 x 25)	WD01-00796	37.	Nut M12	WD01-00821
5.	Rack	WD02-00286	38.	Grub screw (M8 x10)	WD01-00689
6.	Column	WD02-00287	39.	Motor pulley	WD02-00297
7.	Grub screw (M6 x 12)	WD01-00740	40.	Motor	WD02-00298
8.	Rack collar	WD02-00288	41.	Nut M8	WD01-00687
9.	Screw (M6 x 16)	WD01-00708	42.	Cam assembly	WD02-00299
10.	Handle cap	WD02-00289	43.	Washer	WD02-00300
11.	Screw (M8 x 20)	WD01-00801	44.	Protecting ring	WD01-00839
12.	Spring washer M8	WD01-00673	45.	Speed label	WD02-00301
13.	Handle knob	WD02-00290	46.	Pulley cover	WD02-00302
14.	Handle	WD02-00291	47.	Microswitch	WD01-00706
15.	Label	WD02-00292	48.	Washer M5	WD01-00881
16.	Knob	WD01-00867	49.	Spring washer M5	WD01-00882
17.	Scale	WD02-00293	50.	Nut M5	WD01-00697
18.	Connection	WD02-00294	51.	Nut M6	WD01-00710
19.	Pinion shaft	WD02-00295	52.	Spring washer M6	WD01-00707
20.	Roll pin (5 x 16)	WD01-00868	53.	Washer M6	WD01-00702
21.	Warning label	WD01-00685	54.	Microswitch holder	WD01-00709
22.	Screw (M5 x 10)	WD01-00726	55.	Eccentric shaft	WD02-00303
23.	Spindle pulley nut (M24 x 1.5)	WD01-00907	56.	Centre pulley	WD02-00304
24.	Roll pin (5 x 25)	WD01-00869	57.	Bearing 6202	WD01-00771
25.	Roll pin (6 x 18)	WD01-00760	58.	Circlip	WD01-00831
26.	Locking handle	WD01-00870	59.	Belt A550	WD02-00305
27.	Belt tension handle	WD01-00812	60.	Knurled screw	WD02-00306
28.	Circlip	WD01-00813	61.	Circlip	WD01-00704
29.	Circlip	WD01-00871	63.	Screw (M5 x 16)	WD01-00838
30.	Shaft	WD01-00872	64.	Mains lead clamp	WD01-00700
31.	Adjusting shaft	WD01-00873	65.	Protecting ring	WD01-00770
32.	Washer M12	WD01-00819	66.	Belt A620	WD02-00307
33.	Bolt (M8 x 25)	WD01-00695	67.	Spindle pulley	WD02-00308

ELECTRICAL CONNECTION...cont



Note: Always make sure the mains supply is of the correct voltage and the correct fuse protection is used. In the event of replacing the fuse always replace the fuse with the same value as the original.



Note: If an extension lead is required in order to reach the mains supply; ensure that this too is rated for the correct voltage and fuse rating.



Note: The cross section of the extension lead should be checked so that it is of sufficient size so as to reduce the chances of voltage drops.

GUARANTEE

Guarantee:

These SIP pillar drills are covered by a 12 month parts and labour warranty covering failure due to manufacturers defects. This does not cover failure due to misuse or operating the pillar drill outside the scope of this manual - any claims deemed to be outside the scope of the warranty may be subject to charges including, but not limited to parts, labour and carriage costs.

This guarantee does not cover consumables such as the chuck, belts etc.

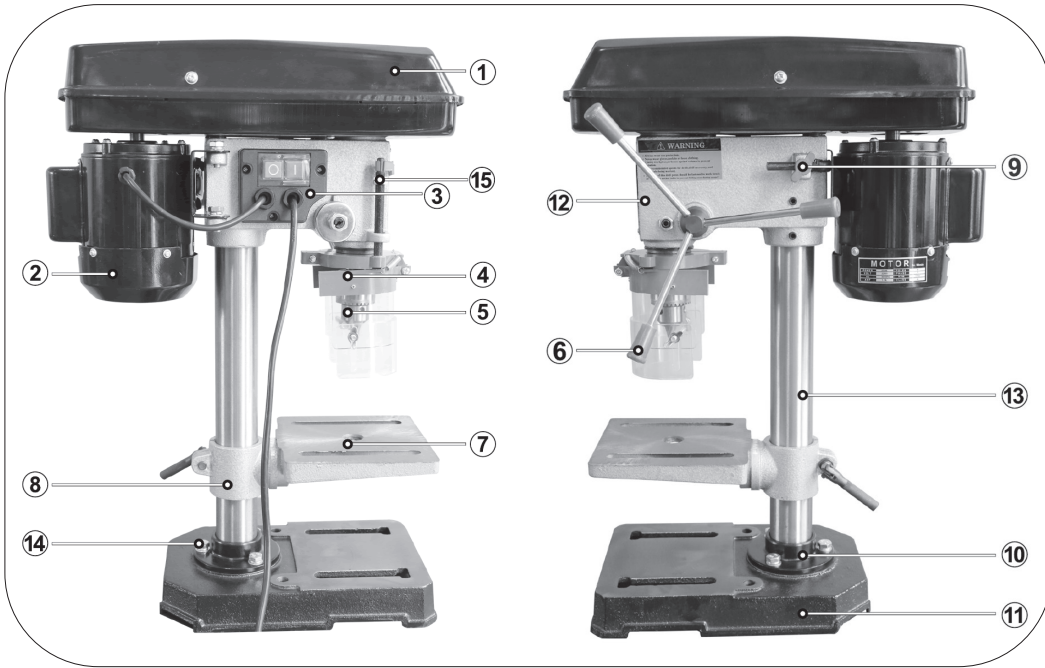
In the unlikely event of warranty claims, contact your distributor as soon as possible.



Note: Proof of purchase will be required before any warranty can be honoured.

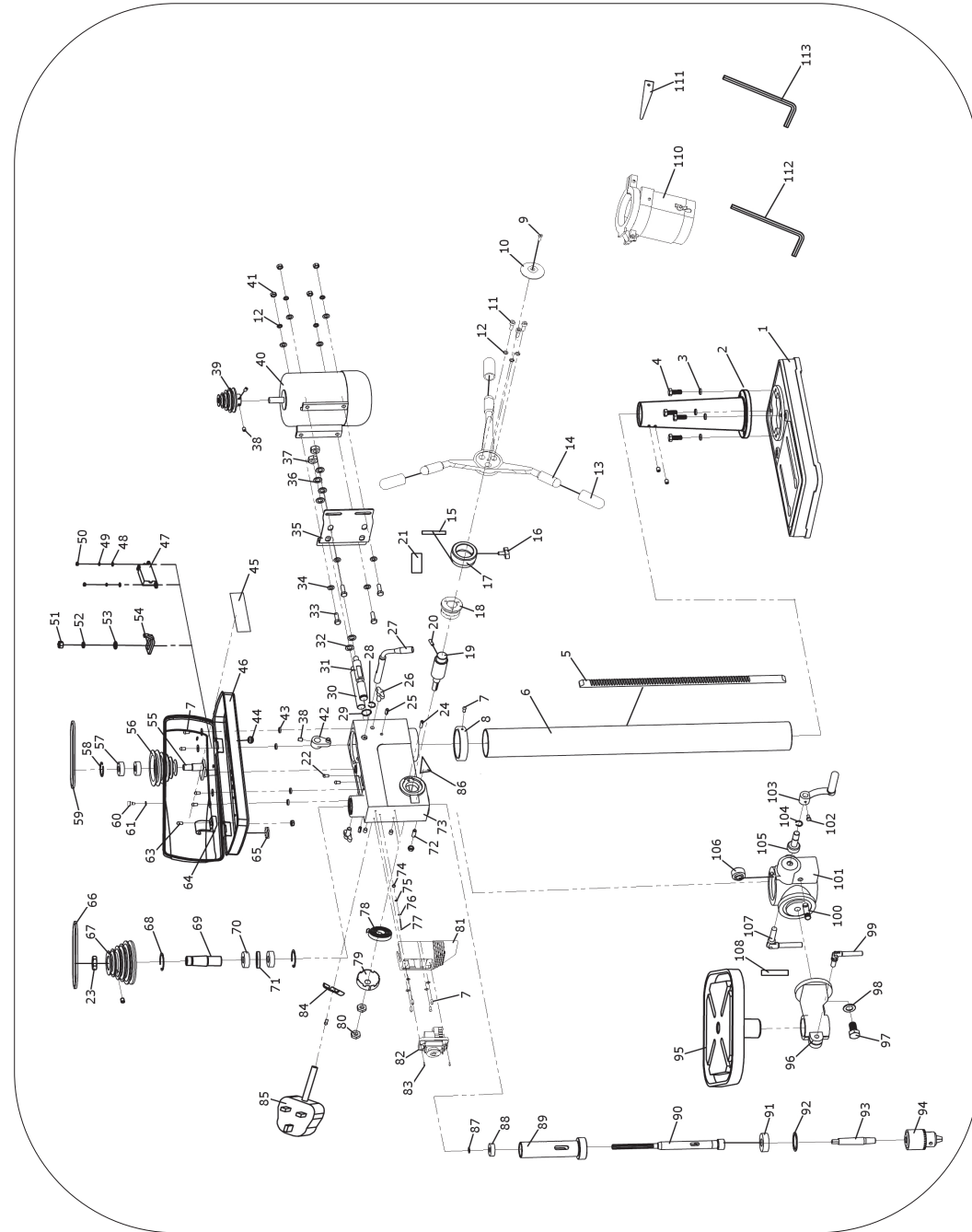
GETTING TO KNOW YOUR DRILL

01700



Ref. No.	Description	Ref. No.	Description
1.	Pulley Cover	9.	Belt Tension Lock
2.	Motor	10.	Column Support
3.	NVR On/Off Switch	11.	Base
4.	Chuck Guard	12.	Main Drill Head
5.	Chuck	13.	Column
6.	Feed Handle	14.	Column Support Bolts
7.	Table	15.	Depth Stop
8.	Table Support Collar		

EXPLODED DRAWING - 01706

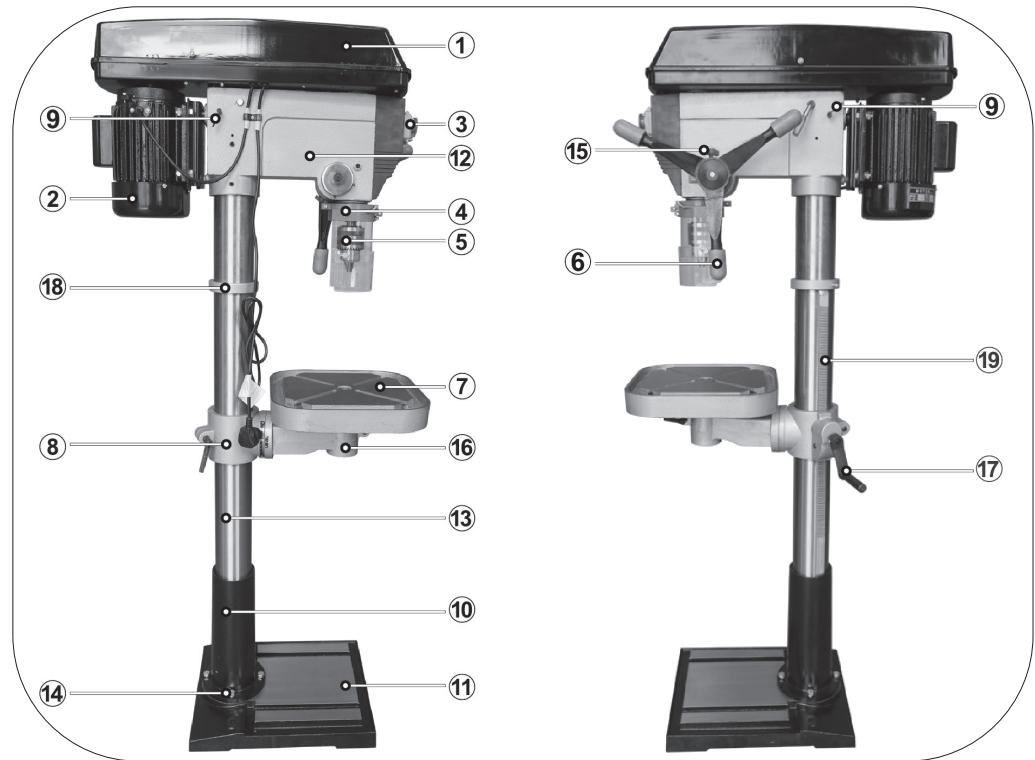


PARTS LIST - 01705...cont

Ref. No.	Description	SIP Part No.	Ref. No.	Description	SIP Part No.
68.	Circlip	WD01-00713	91.	Bearing 6006	WD01-00900
69.	Spindle shaft	WD01-00888	92.	Washer	WD01-00901
70.	Bearing 6005	WD01-00889	93.	Arbor MT2	66633
71.	Bearing ring	WD01-00890	94.	Chuck	WD01-00789
72.	Screw (M8 x 25)	WD01-00891	95.	Table	WD01-00902
73.	Casting	WD01-00892	96.	Table arm	WD01-00903
74.	Label	WD01-00893	97.	Bolt (M16 x 30)	WD01-00854
75.	Lock washer	WD01-00725	98.	Spring washer M16	WD01-00853
76.	Clip	WD01-00724	99.	Lock handle	WD01-00904
77.	Screw (M5 x 6)	WD01-00894	100.	Worm pin	WD01-00850
78.	Tension spring	WD01-00842	101.	Table support	WD01-00849
79.	Tension spring cover	WD01-00841	102.	Bolt (M6 x 12)	WD01-00905
80.	Nut M12	WD01-00821	103.	Crank handle	WD01-00906
81.	Switch box	WD01-00910	104.	Circlip	WD01-00742
82.	Switch	WD01-00895	105.	Worm shaft	WD01-00911
83.	Screw (M3 x 10)	WD01-00896	106.	Worm gear	WD01-00848
84.	Mains lead clamp	WD01-00700	107.	Locking handle	WD01-00852
85.	Mains lead	WD01-00720	108.	Angle label	WD01-00851
86.	Indicator	WD01-00897	110.	Chuck guard 55mm	07662
87.	Circlip	WD01-00787	111.	Drift key	WD01-00862
88.	Bearing 6203	WD01-00714	112.	Hex. wrench 4mm	WD01-00737
89.	Quill	WD01-00898	113.	Hex. wrench 6mm	WD01-00861
90.	Spindle	WD01-00899			

GETTING TO KNOW YOUR DRILL...cont

01701 - 01708



Ref. No.	Description	Ref. No.	Description
1.	Pulley Cover	11.	Base
2.	Motor	12.	Main Drill Head
3.	NVR On/Off Switch	13.	Column
4.	Chuck Guard	14.	Column Support Bolts
5.	Chuck	15.	Depth Stop
6.	Feed Handle	16.	Table Lock
7.	Table	17.	Table Height Adjust
8.	Table Support Collar	18.	Rack Collar
9.	Belt Tension Lock	19.	Rack
10.	Column Support		

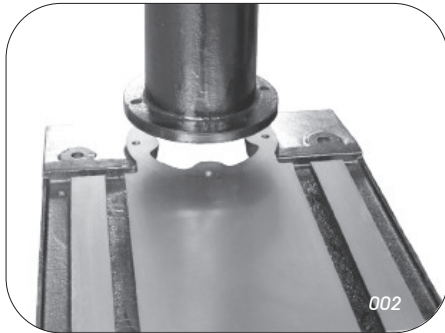
ASSEMBLY INSTRUCTIONS

FIT THE COLUMN TO THE BASE - BENCH DRILL



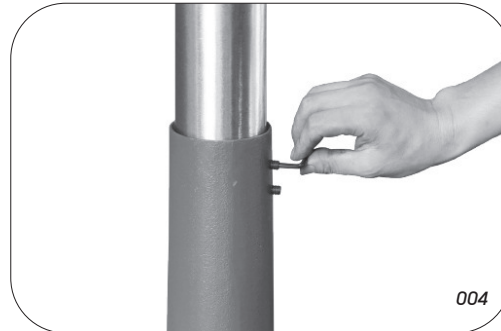
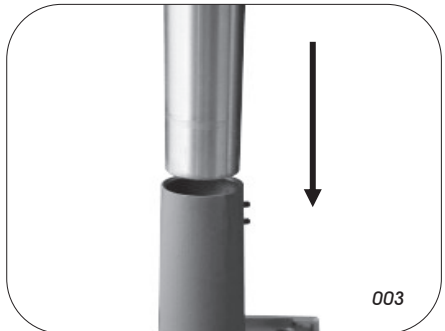
- Line up the 4 holes on the bottom of the column with those on the base.
- Screw the 4 bolts supplied through the column and into the base.
- Fully tighten to secure (001).

FIT THE COLUMN TO THE BASE - FLOOR DRILL



- Line up the 4 holes on the bottom of the column support with those on the base (002).
- Screw the 4 x bolts supplied through the column support and into the base.
- Fully tighten to secure.

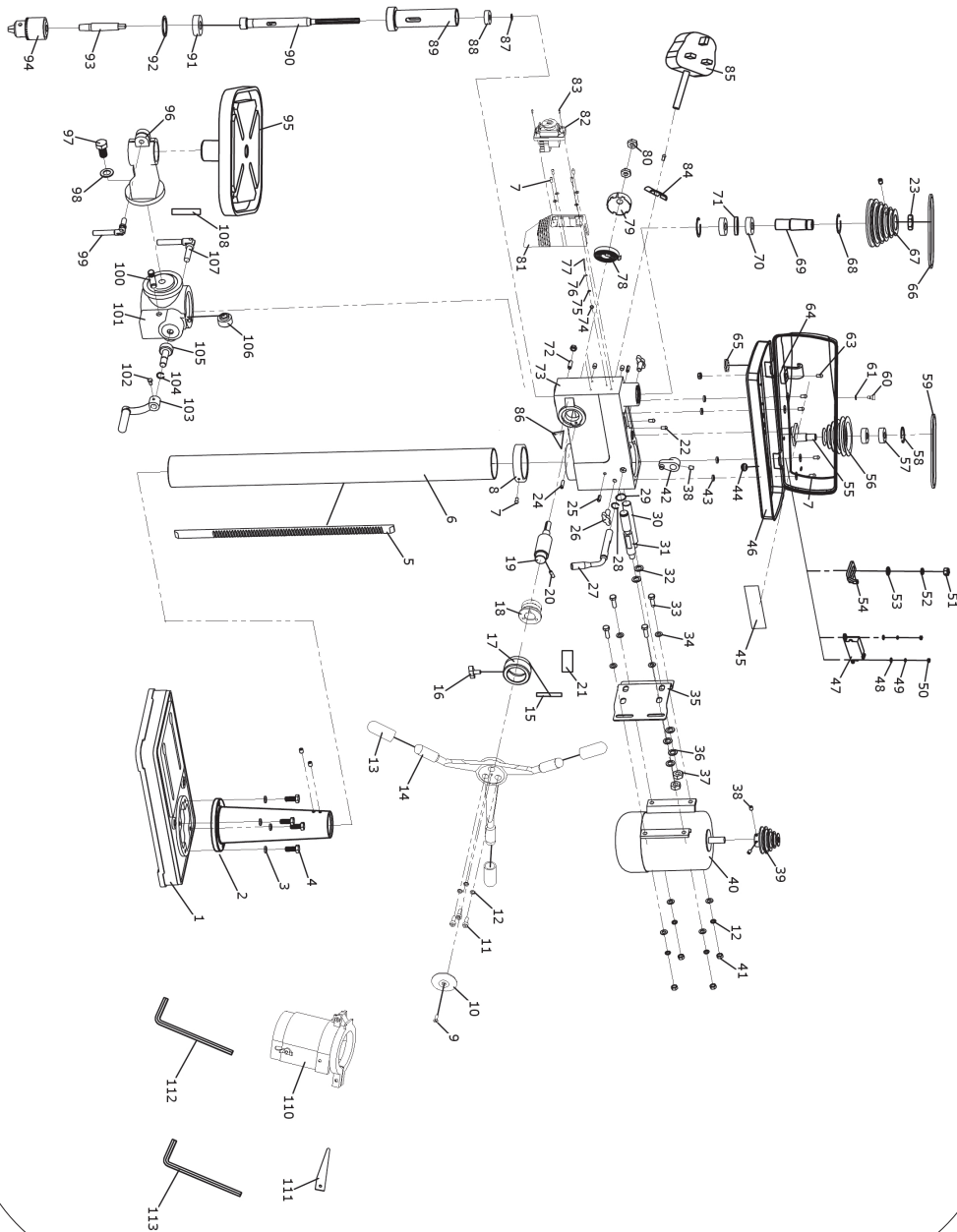
- Slide the column into the column support (003).
- Secure in place by tightening the 2 grub screws (004).



PARTS LIST - 01705

Ref. No.	Description	SIP Part No.	Ref. No.	Description	SIP Part No.
1.	Base	WD01-00863	34.	Washer M8	WD01-00672
2.	Column flange	WD01-00864	35.	Motor plate	WD01-00874
3.	Spring washer M10	WD01-00795	36.	Spring washer M12	WD01-00676
4.	Bolt (M10 x 25)	WD01-00796	37.	Nut M12	WD01-00821
5.	Rack	WD02-00282	38.	Grub screw (M8 x10)	WD01-00689
6.	Column	WD02-00283	39.	Motor pulley	WD01-00876
7.	Grub screw (M6 x 12)	WD01-00740	40.	Motor	WD01-00877
8.	Rack collar	WD01-00799	41.	Nut M8	WD01-00687
9.	Screw (M6 x 16)	WD01-00708	42.	Cam assembly	WD01-00909
10.	Handle cap	WD01-00800	43.	Washer	WD01-00878
11.	Screw (M8 x 20)	WD01-00801	44.	Protecting ring	WD01-00839
12.	Spring washer M8	WD01-00673	45.	Speed label	WD01-00879
13.	Handle knob	WD01-00802	46.	Pulley cover	WD01-00880
14.	Handle	WD01-00803	47.	Microswitch	WD01-00706
15.	Label	WD01-00866	48.	Washer M5	WD01-00881
16.	Knob	WD01-00867	49.	Spring washer M5	WD01-00882
17.	Scale	WD01-00805	50.	Nut M5	WD01-00697
18.	Connection	WD01-00806	51.	Nut M6	WD01-00710
19.	Pinion shaft	WD01-00809	52.	Spring washer M6	WD01-00707
20.	Roll pin (5 x 16)	WD01-00868	53.	Washer M6	WD01-00702
21.	Warning label	WD01-00685	54.	Microswitch holder	WD01-00709
22.	Screw (M5 x 10)	WD01-00726	55.	Eccentric shaft	WD01-00883
23.	Spindle pulley nut (M24 x 1.5)	WD01-00907	56.	Centre pulley	WD01-00884
24.	Roll pin (5 x 25)	WD01-00869	57.	Bearing 6202	WD01-00771
25.	Roll pin (6 x 18)	WD01-00760	58.	Circlip	WD01-00831
26.	Locking handle	WD01-00870	59.	Belt O-565	WD01-00833
27.	Belt tension handle	WD01-00812	60.	Knurled screw	WD01-00885
28.	Circlip	WD01-00813	61.	Circlip	WD01-00704
29.	Circlip	WD01-00871	63.	Screw (M5 x 16)	WD01-00838
30.	Shaft	WD01-00872	64.	Mains lead clamp	WD01-00700
31.	Adjusting shaft	WD01-00873	65.	Protecting ring	WD01-00770
32.	Washer M12	WD01-00819	66.	Belt O-678	WD01-00886
33.	Bolt (M8 x 25)	WD01-00695	67.	Spindle pulley	WD01-00887

EXPLODED DRAWING - 01705

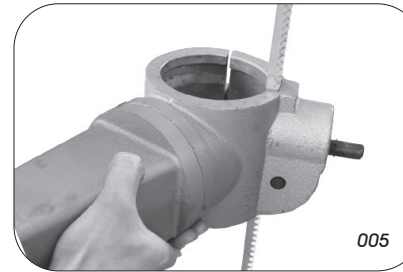


ASSEMBLY INSTRUCTIONS...cont

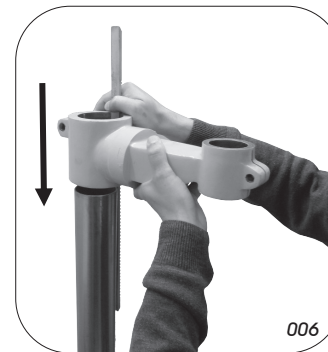
FIT THE TABLE - 01700

- Ensure that the table support lock is loose.
- Slide the table support over the column until it is in position.
- Secure in place by tightening the table lock towards the rear of the table support.

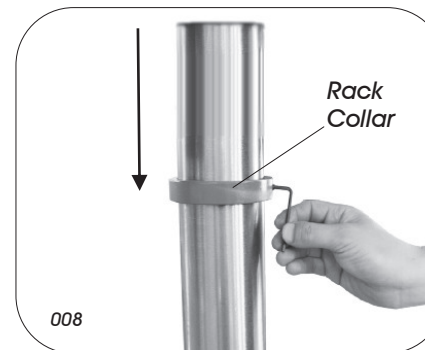
FIT THE RACK & TABLE - ALL OTHER MODELS



- Fit the rack inside the table support as shown (005).

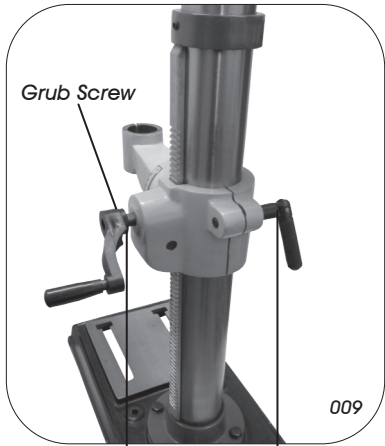


- Fit the table support / rack assembly over the column (006) and slide down until the rack fits inside the column support (007).



- Slide the rack collar, tapered side facing down, over the column until it locates over the rack.
- Tighten the grub screw to hold in position (008).

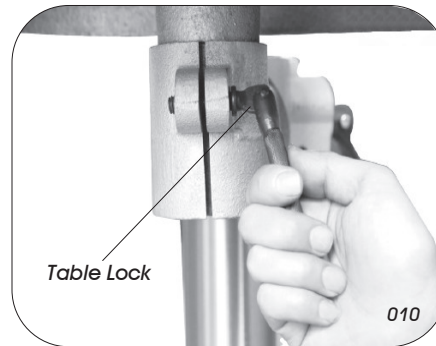
ASSEMBLY INSTRUCTIONS....cont



- Secure the table support arm in place by fitting the table height lock.
- Also fit the table height adjust lever as shown left.
- Secure in place by tightening the grub screw.

Table Height Adjust

- Screw the table lock loosely into the table support.
- Fit the table into the table support.
- Tighten the table lock to secure in position (010).



FIT THE HEAD ONTO THE COLUMN



Danger / Caution: Due to the weight of the head; at least 2 persons are required to safely fit it to the column.



Note: Ensure that any dust or debris left over from the manufacturing process is removed from inside the head and from around the column prior to fitting them together.

PARTS LIST - 01704....cont

Ref. No.	Description	SIP Part No.	Ref. No.	Description	SIP Part No.
69.	Screw (M5 x 16)	WD01-00838	92.	Worm gear	WD01-00848
70.	Mains lead clamp	WD01-00700	93.	Table support	WD01-00849
71.	Protecting ring	WD01-00839	94.	Worm pin	WD01-00850
72.	Protecting ring	WD01-00770	95.	Angle label	WD01-00851
73.	Mains lead	WD01-00720	96.	Locking handle	WD01-00852
74.	Mains lead clamp	WD01-00700	97.	Locking handle	WD01-00814
75.	Nut M12 x 1.75	WD01-00840	98.	Spring washer M16	WD01-00853
76.	Tension spring cover	WD01-00841	99.	Bolt (M16 x 30)	WD01-00854
77.	Tension spring	WD01-00842	100.	Table arm	WD01-00855
78.	Screw	WD01-00843	101.	Table	WD01-00856
79.	Casting	WD01-00844	102.	Circlip	WD01-00787
80.	Label	WD01-00807	103.	Bearing 6204	WD01-00857
81.	Lock washer	WD01-00725	104.	Quill	WD01-00858
82.	Clip	WD01-00724	105.	Spindle	WD01-00859
83.	Screw (M4 x 6)	WD01-00723	106.	Bearing 6201	WD01-00732
84.	Switch box	WD01-00784	107.	Washer	WD01-00860
85.	Screw (M5 x 12)	WD01-00701	108.	Arbor MT2	66633
86.	Switch	WD01-00782	109.	Chuck	WD01-00789
87.	Screw (ST3 x 10)	WD01-00845	110.	Chuck guard 55mm	07662
88.	Crank	WD01-00846	111.	Hex. Wrench 4mm	WD01-00737
89.	Bolt (M6 x 10)	WD01-00847	112.	Hex. Wrench 6mm	WD01-00861
90.	Circlip	WD01-00742	113.	Drift key	WD01-00862
91.	Worm shaft	WD01-00810			

PARTS LIST - 01704

Ref. No.	Description	SIP Part No.	Ref. No.	Description	SIP Part No.
1.	Base	WD01-00793	35.	Washer M8	WD01-00672
2.	Column flange	WD01-00794	36.	Motor plate	WD01-00820
3.	Spring washer M10	WD01-00795	37.	Nut M12	WD01-00821
4.	Bolt (M10 x 25)	WD01-00796	38.	Grub screw (M8 x 10)	WD01-00689
5.	Rack	WD02-00280	39.	Motor pulley	WD01-00822
6.	Column	WD02-00281	40.	Motor	WD01-00823
7.	Screw (M6 x 12)	WD01-00740	41.	Spring washer M12	WD01-00676
8.	Rack collar	WD01-00799	42.	Nut M8	WD01-00687
9.	Screw (M6 x 16)	WD01-00708	43.	Cam pin	WD01-00824
10.	Handle cap	WD01-00800	44.	Cam	WD01-00825
11.	Screw (M8 x 20)	WD01-00801	45.	Washer	WD01-00826
12.	Spring washer M8	WD01-00673	46.	Speed label	WD01-00827
13.	Handle knob	WD01-00802	47.	Nut M5	WD01-00697
14.	Handle	WD01-00803	48.	Pulley cover	WD01-00828
15.	Knob	WD01-00804	49.	Washer M6	WD01-00702
16.	Scale	WD01-00805	50.	Microswitch	WD01-00706
17.	Connection	WD01-00806	51.	Washer M6	WD01-00702
18.	Label	WD01-00807	52.	Spring washer M6	WD01-00707
19.	Roll pin (5 x 18)	WD01-00808	53.	Screw (M6 x 16)	WD01-00708
20.	Pinion shaft	WD01-00809	54.	Microswitch holder	WD01-00709
21.	Warning label	WD01-00685	55.	Nut M6	WD01-00710
22.	Roll pin (6 x 18)	WD01-00760	56.	Eccentric shaft	WD01-00829
23.	Indicator	WD01-00811	57.	Centre pulley	WD01-00830
24.	Belt tension handle	WD01-00812	58.	Bearing 6202	WD01-00771
25.	Circlip	WD01-00813	59.	Circlip	WD01-00831
26.	Locking handle	WD01-00814	60.	Belt O-500	WD01-00832
27.	Roll pin (6 x 18)	WD01-00760	61.	Belt O-565	WD01-00833
29.	Screw (M5 x 10)	WD01-00726	62.	Spindle pulley	WD01-00834
30.	Circlip	WD01-00816	63.	Circlip	WD01-00713
31.	Shaft	WD01-00817	64.	Spindle shaft	WD01-00835
32.	Adjusting shaft	WD01-00818	65.	Bearing 6203	WD01-00714
33.	Washer M12	WD01-00819	66.	Knurled screw	WD01-00836
34.	Bolt (M8 x 25)	WD01-00695	67.	Circlip	WD01-00704

ASSEMBLY INSTRUCTIONS...cont



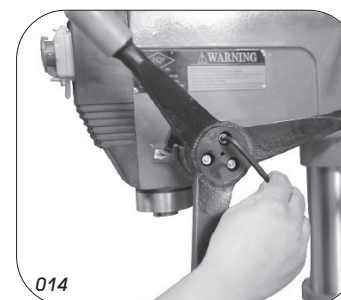
FIT THE FEED HANDLE - 01700 & 01701

- Carefully raise the head above the column.
- Ensure that the hole in the bottom of the drill head lines up with the column.
- Lower the head down the column taking care that the head and the column stay square with each other.
- Line up the spindle with the table and base (011).
- Secure in place by tightening the 2 x grub screws on each side (012).



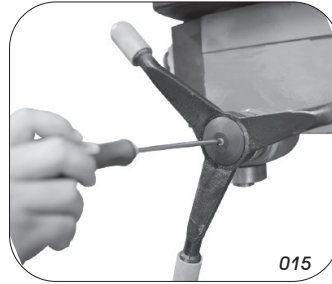
- To fit the feed handles; simply screw them into the hub, as shown (013).

FIT THE FEED HANDLE - 01702 - 01708



- Fit the cast feed handle over the hub.
- Secure in place by tightening the 3 x screws, as shown (014).

- Fit the cover and secure with the screw (015).



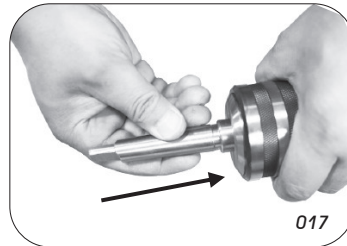
FIT THE ARBOR & CHUCK



Prior to fitting the chuck / arbor; Fit the chuck guard:

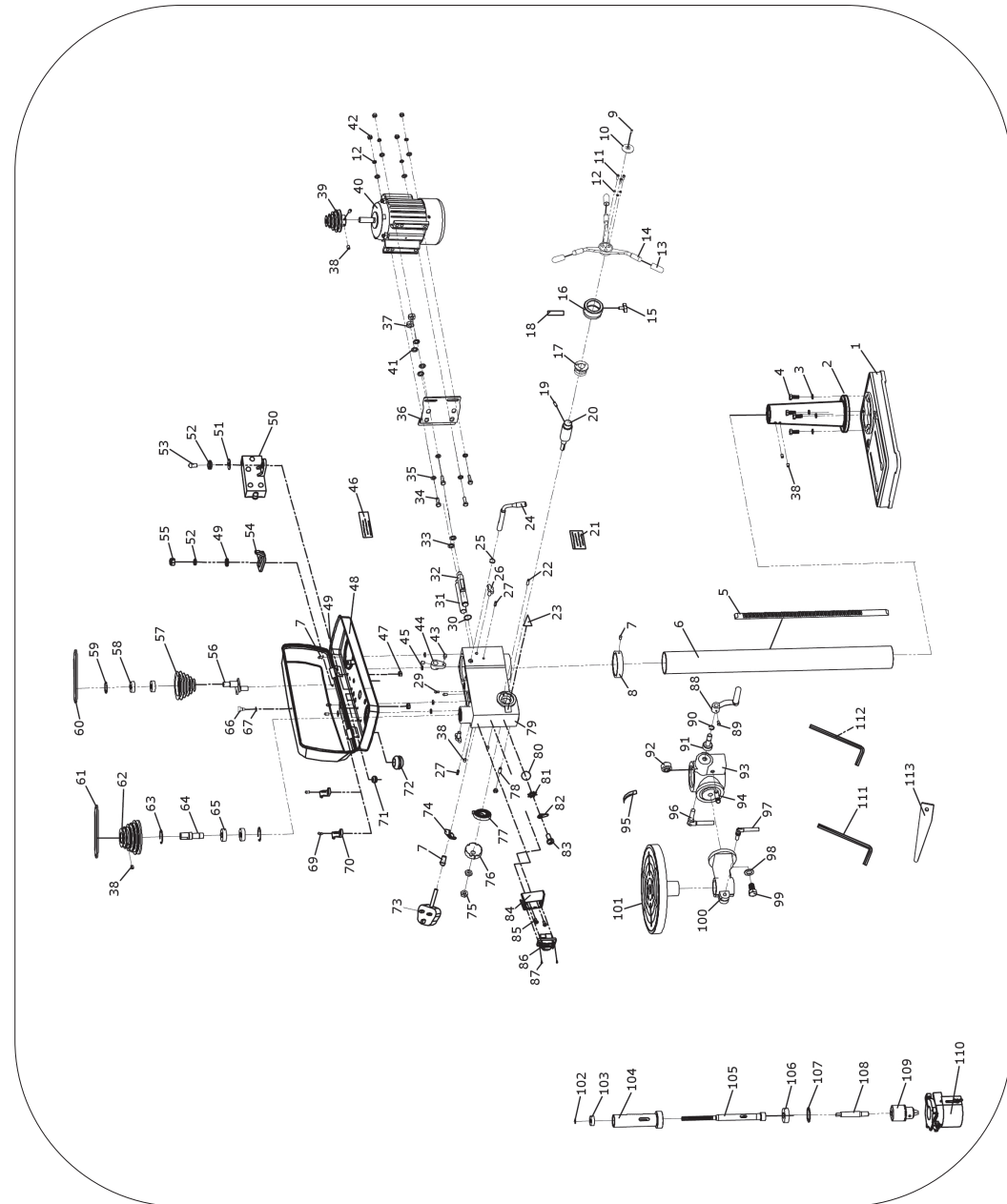
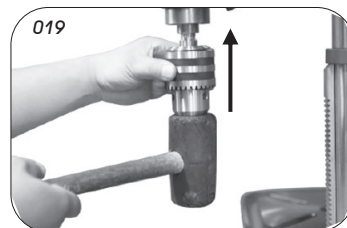
- Slide the chuck guard over the spindle collar ensuring that the 'open' part of the guard faces towards the back.
- Tighten the screw to secure in place.

- Ensure that the outside of the arbor and the inside of the chuck are clean and free of dust/debris.
- Slide the arbor into the chuck with reasonable force, as shown (017).



- Ensure that the chuck jaws are wound all the way in (inside the chuck) to prevent them from getting damaged (018).

- Slide the arbor and chuck into the spindle.
- Rotate the arbor with small upward pressure until it 'seats' correctly.
- Tap the arbor with a piece of scrap wood or a mallet to ensure it stays in place (019).



PARTS LIST - 01703...cont

Ref. No.	Description	SIP Part No.	Ref. No.	Description	SIP Part No.
69.	Spindle shaft	WD01-00888	92.	Washer	WD01-00901
70.	Bearing 6005	WD01-00889	93.	Arbor MT2	66633
71.	Bearing ring	WD01-00890	94.	Chuck	WD01-00789
72.	Screw (M8 x 25)	WD01-00891	95.	Table	WD01-00902
73.	Castling	WD01-00892	96.	Table arm	WD01-00903
74.	Label	WD01-00893	97.	Bolt (M16 x 30)	WD01-00854
75.	Lock washer	WD01-00725	98.	Spring washer M16	WD01-00853
76.	Clip	WD01-00724	99.	Lock handle	WD01-00904
77.	Screw (M5 x 6)	WD01-00894	100.	Worm pin	WD01-00850
78.	Tension spring	WD01-00842	101.	Table support	WD01-00849
79.	Tension spring cover	WD01-00841	102.	Bolt (M6 x 12)	WD01-00905
80.	Nut M12	WD01-00821	103.	Crank handle	WD01-00906
81.	Switch box	WD01-00910	104.	Circlip	WD01-00742
82.	Switch	WD01-00895	105.	Worm shaft	WD01-00911
83.	Screw (M3 x 10)	WD01-00896	106.	Worm gear	WD01-00848
84.	Mains lead clamp	WD01-00700	107.	Locking handle	WD01-00852
85.	Mains lead	WD01-00720	108.	Angle label	WD01-00851
86.	Indicator	WD01-00897	109.	Chuck guard 55mm	07662
87.	Circlip	WD01-00787	110.	Drift key	WD01-00862
88.	Bearing 6203	WD01-00714	111.	Hex. Wrench 4mm	WD01-00737
89.	Quill	WD01-00898	112.	Hex. Wrench 6mm	WD01-00861
90.	Spindle	WD01-00899	113.	Spindle pulley nut (M24 x 1.5)	WD01-00907
91.	Bearing 6006	WD01-00900			

OPERATING INSTRUCTIONS

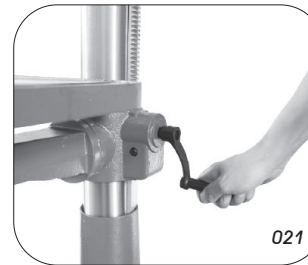
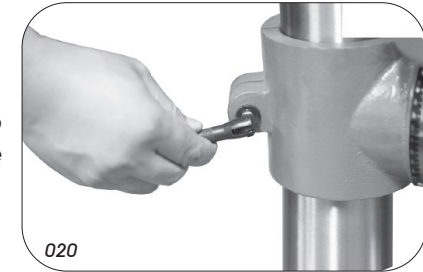


Danger: Before making any changes or adjustments, ensure that the drill is turned off, and the mains lead is removed from the supply socket.

SETTINGS & ADJUSTMENTS

Setting The Table Height:

- Loosen the table height lock (020).
- For the 01700, simply slide the table up/down to the desired height and re-tighten the table height lock.



- For all other models; Rotate the table height adjustment handle until the table is at the required height (021).
- Re-tighten the table height lock.

Setting The Table Angle:

- The table angle can be adjusted by loosening the table angle lock located underneath the table (022).



- Rotate the table to the desired angle (023).
- Re-tighten the angle lock.

OPERATING INSTRUCTIONS...cont

ON / OFF (NVR) SWITCH

Once fully assembled and adjusted, and all safety precautions have been followed; the pillar drill is ready to be run.

Your SIP pillar drill is fitted with a safety NVR (No Volt Release) switch. This means that if the power is cut to the drill (such as in a power failure); the motor will not start to run once the power is returned without the operator following the instructions below to re-start the drill.

To start the drill - press the green (I) button.
To stop the drill - press the red (O) button or press down on the emergency stop cover.

ADJUSTING THE SPEED - 01700 & 01701

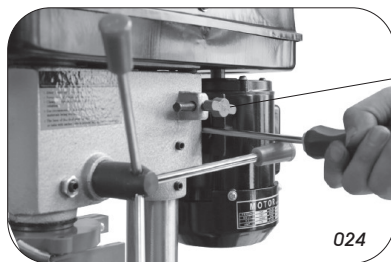


Danger: Before making any changes or adjustments, ensure that the drill is turned off, and the mains lead is removed from the supply socket.



Note: The speed of the pillar drill can be changed by adjusting the position of the belt on the pulley system. See the chart inside the pulley cover for speed configurations.

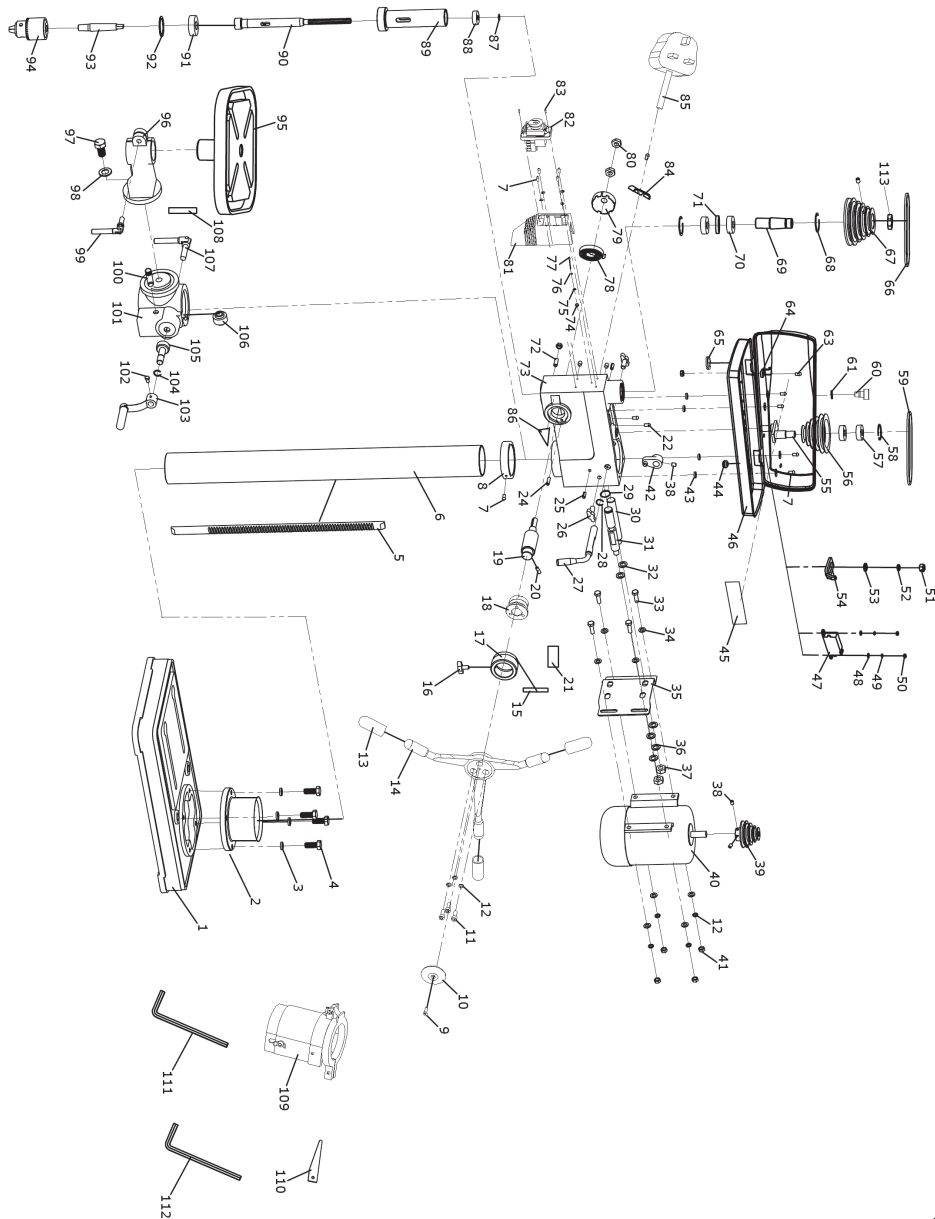
- Open the pulley cover.
- Slacken off the belt tension lock.
- Consult the chart inside the pulley cover, and position the belt on the pulley's according to the spindle speed required.
- When the belt has been correctly positioned, re-tension by levering the motor away from the head (024); Lever the motor with its bracket, away from the head, so that tension is applied to the belt.
- Tension is correct when the belt deflects by approx. 1/2" at its centre, when using reasonable thumb pressure.
- Lock the motor in this position using the belt tension lock.



Belt Tension Lock

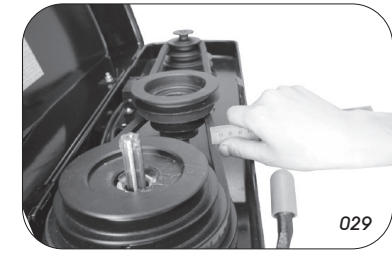
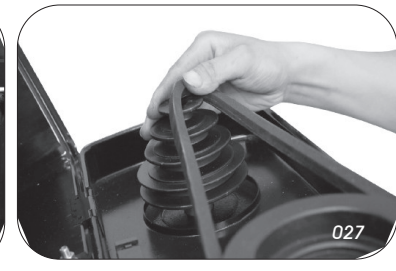
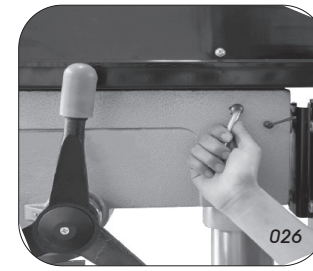
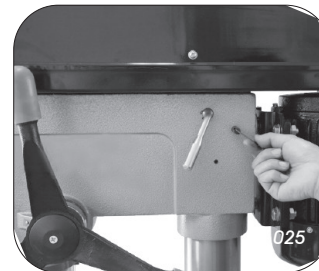
PARTS LIST - 01703

Ref. No.	Description	SIP Part No.	Ref. No.	Description	SIP Part No.
1.	Base	WD01-00863	35.	Motor plate	WD01-00874
2.	Column flange	WD01-00864	36.	Spring washer M12	WD01-00676
3.	Spring washer M10	WD01-00795	37.	Nut M12	WD01-00821
4.	Bolt (M10 x 25)	WD01-00796	38.	Grub screw (M8 x10)	WD01-00689
5.	Rack	WD01-00908	39.	Motor pulley	WD01-00876
6.	Column	WD01-00865	40.	Motor	WD01-00877
7.	Grub screw (M6 x 12)	WD01-00740	41.	Nut M8	WD01-00687
8.	Rack collar	WD01-00799	42.	Cam assembly	WD01-00909
9.	Screw (M6 x 16)	WD01-00708	43.	Washer	WD01-00878
10.	Handle cap	WD01-00800	44.	Protecting ring	WD01-00839
11.	Screw (M8 x 20)	WD01-00801	45.	Speed label	WD01-00879
12.	Spring washer M8	WD01-00673	46.	Pulley cover	WD01-00880
13.	Handle knob	WD01-00802	47.	Microswitch	WD01-00706
14.	Handle	WD01-00803	48.	Washer M5	WD01-00881
15.	Label	WD01-00893	49.	Spring washer M5	WD01-00882
16.	Knob	WD01-00867	50.	Nut M5	WD01-00697
17.	Scale	WD01-00805	51.	Nut M6	WD01-00710
18.	Connection	WD01-00806	52.	Spring washer M6	WD01-00707
19.	Pinion shaft	WD01-00809	53.	Washer M6	WD01-00702
20.	Roll pin (5 x 16)	WD01-00868	54.	Microswitch holder	WD01-00709
21.	Warning label	WD01-00685	55.	Eccentric shaft	WD01-00883
22.	Screw (M5 x 10)	WD01-00726	56.	Centre pulley	WD01-00884
24.	Roll pin (5 x 25)	WD01-00869	57.	Bearing 6202	WD01-00771
25.	Roll pin (6 x 18)	WD01-00760	58.	Circlip	WD01-00831
26.	Locking handle	WD01-00870	59.	Belt O-565	WD01-00833
27.	Belt tension handle	WD01-00812	60.	Knurled screw	WD01-00885
28.	Circlip	WD01-00813	61.	Circlip	WD01-00704
29.	Circlip	WD01-00871	63.	Screw (M5 x 16)	WD01-00838
30.	Shaft	WD01-00872	64.	Mains lead clamp	WD01-00700
31.	Adjusting shaft	WD01-00873	65.	Protecting ring	WD01-00770
32.	Washer M12	WD01-00819	66.	Belt O-678	WD01-00886
33.	Bolt (M8 x 25)	WD01-00695	67.	Spindle pulley	WD01-00887
34.	Washer M8	WD01-00672	68.	Circlip	WD01-00713



ADJUSTING THE SPEED - ALL OTHER MODELS

- Release the belt tension locks located on either side of the main housing (025).
- Once the tension is released, the belt tension handle can be used to move the motor pulley closer to the idler pulley (026).
- The belt is removed by lifting it over the lip of the pulley while rotating the pulley simultaneously (027).
- After re-adjusting the belts, use the belt tension handle to move the motor pulley further away from the idler pulley. When the desired position is achieved use the belt tension locks to secure the pulleys in place (028).
- Proper belt tension is achieved when the measured deflection (by pushing in the centre of the belt) is approx. 1/2" (029).

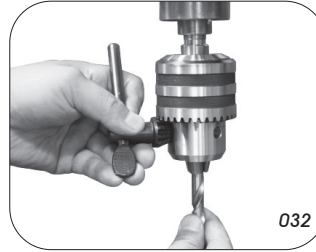
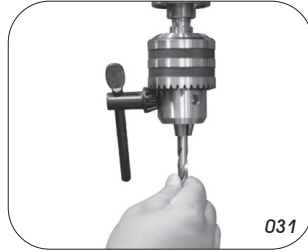
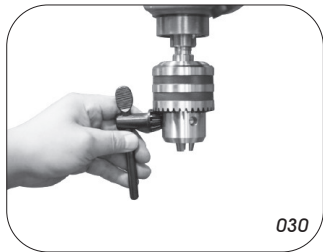


OPERATING INSTRUCTIONS...cont

FITTING A DRILL BIT

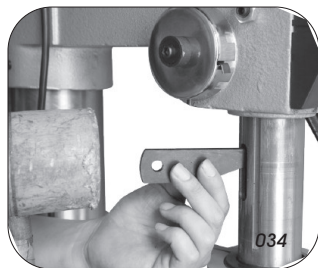
To fit a straight shank bit:

- Open the jaws of the drill chuck (fit the chuck key into the chuck and turn it anti-clockwise) enough to fit the required bit (030).
- Push the bit into the chuck (031).
- Secure the bit in place by tightening the jaws with the chuck key (032).



To fit a morse taper bit:

- Lower the chuck to its lowest position; Turn the chuck by hand until both slots align (033).
- Insert the drift key into the slot (034) and tap firmly with a metal hammer until it releases (Ensure the chuck jaws are wound all the way up to prevent damage).
- Place the taper bit into the spindle hole (035), twisting and pushing upward until the bit is correctly seated.



PARTS LIST - 01702...cont

Ref. No.	Description	SIP Part No.	Ref. No.	Description	SIP Part No.
69.	Screw (M5 x 16)	WD01-00838	92.	Worm gear	WD01-00848
70.	Mains lead clamp	WD01-00700	93.	Table support	WD01-00849
71.	Protecting ring	WD01-00839	94.	Worm pin	WD01-00850
72.	Protecting ring	WD01-00770	95.	Angle label	WD01-00851
73.	Mains lead	WD01-00720	96.	Locking handle	WD01-00852
74.	Mains lead clamp	WD01-00700	97.	Locking handle	WD01-00814
75.	Nut M12 x 1.75	WD01-00840	98.	Spring washer M16	WD01-00853
76.	Tension spring cover	WD01-00841	99.	Bolt (M16 x 30)	WD01-00854
77.	Tension spring	WD01-00842	100.	Table arm	WD01-00855
78.	Screw {	WD01-00843	101.	Table	WD01-00856
79.	Casting	WD01-00844	102.	Circlip	WD01-00787
80.	Label		103.	Bearing 6204	WD01-00857
81.	Lock washer	WD01-00725	104.	Quill	WD01-00858
82.	Clip	WD01-00724	105.	Spindle	WD01-00859
83.	Screw (M4 x 6)	WD01-00723	106.	Bearing 6201	WD01-00732
84.	Switch box	WD01-00784	107.	Washer	WD01-00860
85.	Screw (M5 x 12)	WD01-00701	108.	Arbor MT2	66633
86.	Switch	WD01-00782	109.	Chuck	WD01-00789
87.	Screw (ST3 x 10)	WD01-00845	110.	Chuck guard 55mm	07662
88.	Crank	WD01-00846	111.	Hex. Wrench 4mm	WD01-00737
89.	Bolt (M6 x 10)	WD01-00847	112.	Hex. Wrench 6mm	WD01-00861
90.	Circlip	WD01-00742	113.	Drift key	WD01-00862
91.	Worm shaft	WD01-00810			

PARTS LIST - 01702

Ref. No.	Description	SIP Part No.	Ref. No.	Description	SIP Part No.
1.	Base	WD01-00793	35.	Washer M8	WD01-00672
2.	Column flange	WD01-00794	36.	Motor plate	WD01-00820
3.	Spring washer M10	WD01-00795	37.	Nut M12	WD01-00821
4.	Bolt (M10 x 25)	WD01-00796	38.	Grub screw (M8 x 10)	WD01-00689
5.	Rack	WD01-00797	39.	Motor pulley	WD01-00822
6.	Column	WD01-00798	40.	Motor	WD01-00823
7.	Screw (M6 x 12)	WD01-00740	41.	Spring washer M12	WD01-00676
8.	Rack collar	WD01-00799	42.	Nut M8	WD01-00687
9.	Screw (M6 x 16)	WD01-00708	43.	Cam pin	WD01-00824
10.	Handle cap	WD01-00800	44.	Cam	WD01-00825
11.	Screw (M8 x 20)	WD01-00801	45.	Washer	WD01-00826
12.	Spring washer M8	WD01-00673	46.	Speed label	WD01-00827
13.	Handle knob	WD01-00802	47.	Nut M5	WD01-00697
14.	Handle	WD01-00803	48.	Pulley cover	WD01-00828
15.	Knob	WD01-00804	49.	Washer M6	WD01-00702
16.	Scale	WD01-00805	50.	Microswitch	WD01-00706
17.	Connection	WD01-00806	51.	Washer M6	WD01-00702
18.	Label	WD01-00807	52.	Spring washer M6	WD01-00707
19.	Roll pin (5 x 18)	WD01-00808	53.	Screw (M6 x 16)	WD01-00708
20.	Pinion shaft	WD01-00809	54.	Microswitch holder	WD01-00709
21.	Warning label	WD01-00685	55.	Nut M6	WD01-00710
22.	Roll pin (6 x 18)	WD01-00760	56.	Eccentric shaft	WD01-00829
23.	Indicator	WD01-00811	57.	Centre pulley	WD01-00830
24.	Belt tension handle	WD01-00812	58.	Bearing 6202	WD01-00771
25.	Circlip	WD01-00813	59.	Circlip	WD01-00831
26.	Locking handle	WD01-00814	60.	Belt O-500	WD01-00832
27.	Roll pin (6 x 18)	WD01-00760	61.	Belt O-565	WD01-00833
29.	Screw (M5 x 10)	WD01-00726	62.	Spindle pulley	WD01-00834
30.	Circlip	WD01-00816	63.	Circlip	WD01-00713
31.	Shaft	WD01-00817	64.	Spindle shaft	WD01-00835
32.	Adjusting shaft	WD01-00818	65.	Bearing 6203	WD01-00714
33.	Washer M12	WD01-00819	66.	Knurled screw	WD01-00836
34.	Bolt (M8 x 25)	WD01-00695	67.	Circlip	WD01-00704

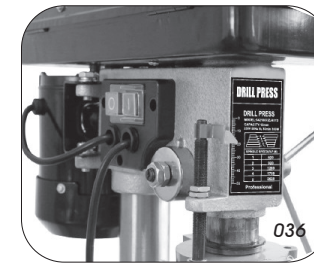
OPERATING INSTRUCTIONS...cont

OPERATING THE DEPTH STOP - 01700

To set the depth of the hole, adjust the depth stop as follows:

- Lower the chuck with the power **OFF**, until the drill bit touches the surface of the workpiece, and hold in that position.
- Spin down the adjuster nut so that the gap between its underside and top of bracket is the depth of the hole required.
- Screw down the lock nut and lock it against the adjuster nut.

The drill is now set to drill holes to your pre-determined depth from that particular start point. i.e. Providing the surface of your workpiece is flat and level, you may drill a series of holes, each to the same depth.



OPERATING THE DEPTH STOP - ALL OTHER MODELS

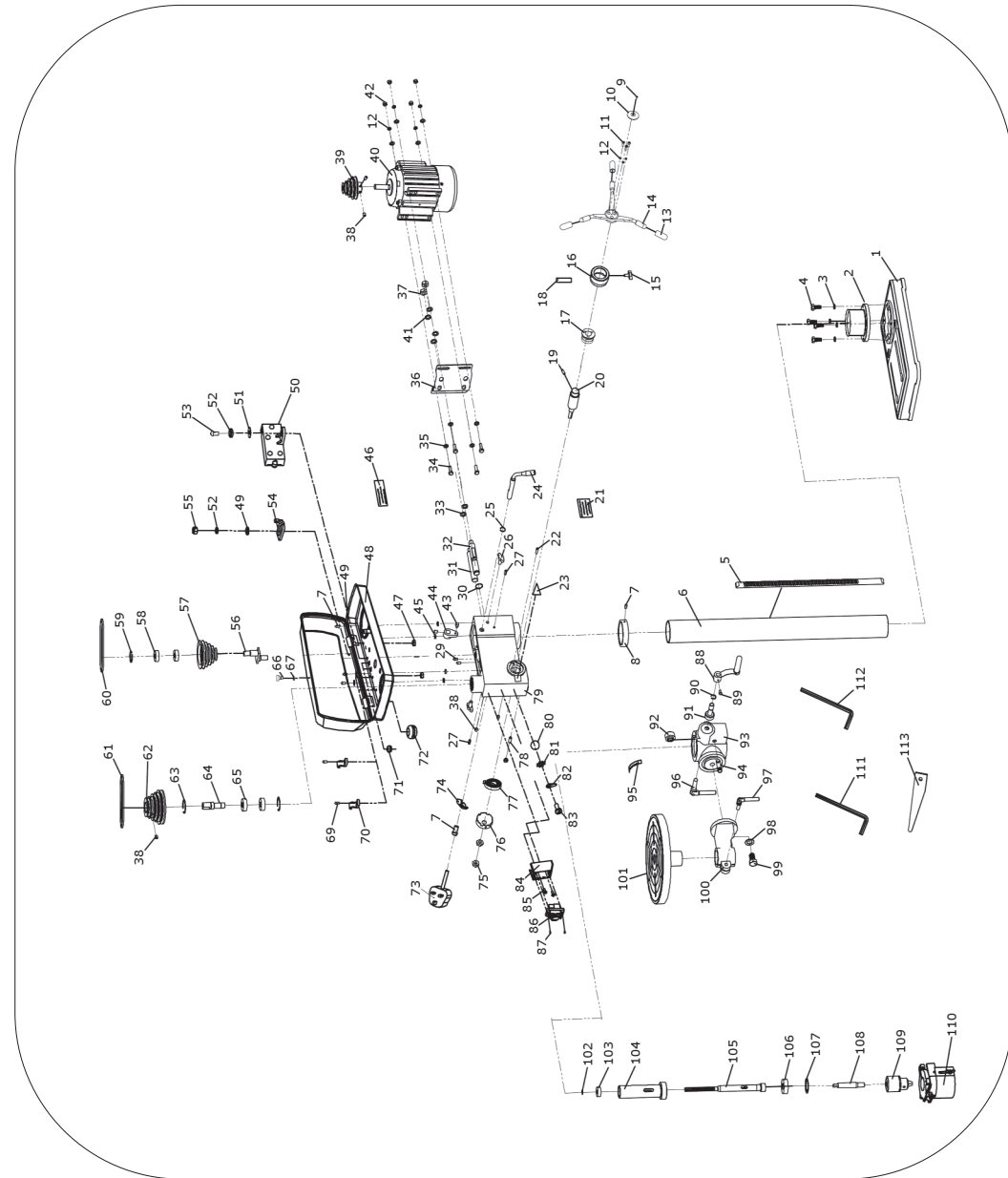
To set the depth of the hole, adjust the depth stop as follows:

- Loosen depth stop lock knob by turning in an anti-clockwise direction (Fig. 37).
- Rotate depth scale to the desired depth, then tighten half wing bolt (Fig. 38).



DRILLING OPERATIONS

- Set the table to the required height; the drill bit should be set just above the workpiece, but not touching it.
- Clamp the workpiece to the table.
- Set the required speed.
- Turn the drill on.
- Allow the drill to reach that speed.
- Turn the feed handle anti clockwise to lower the spindle towards the workpiece.
- Once the operation is complete; guide the feed handle clockwise to raise the spindle.



PARTS LIST - 01701....cont

Ref. No.	Description	SIP Part No.	Ref. No.	Description	SIP Part No.
67.	Switch box	WD01-00784	77.	Chuck guard 40mm	66609
68.	Screw (M4 x 6)	WD01-00723	78.	Hex. wrench	WD01-00790
69.	Clip	WD01-00724	79.	Hex. wrench	WD01-00737
70.	Lock washer	WD01-00725	80.	Belt O-490	WD01-00791
71.	Bearing 6201	WD01-00732	81.	Centre pulley	WD01-00792
72.	Quill	WD01-00785	82.	Eccentric shaft	WD01-00778
73.	Washer	WD01-00786	83.	Nut M5	WD01-00697
74.	Circlip	WD01-00787	84.	Screw (M6 x 16)	WD01-00708
75.	Spindle	WD01-00788	85.	Circlip	WD01-00787
76.	Chuck	WD01-00789			

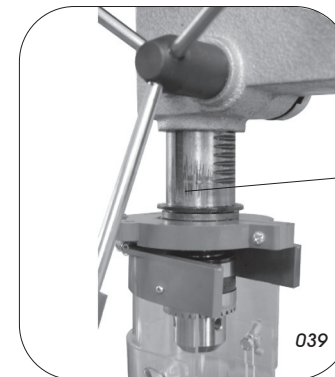
MAINTENANCE

Cleaning and maintenance of this drill is mainly common sense some points for guidance are as follows:

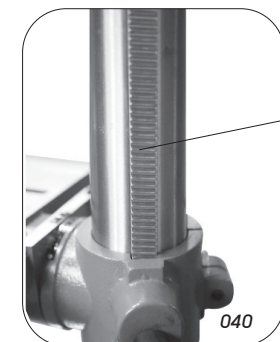
- Regularly check that all the fixing screws are tight.
- The mains lead of the drill and any extension cord used should be checked frequently for damage. If damaged, have the mains lead replaced by an authorised service facility. Replace the extension cord as necessary.
- Regularly check and clean out any dust etc. that may have gathered in the fan housing of the motor.
- After each use brush off any chippings etc. with a soft brush.
- Regularly check the drive belt for wear; Replace if frayed or worn.

Lubrication:

- All bearings are packed with grease at the factory and require no further lubrication.
- Periodically grease or oil all moving parts.
- Periodically apply a thin coat of wax paste or light oil on the column, table and base for lubrication and to help prevent corrosion.
- Occasionally, lubricate the quill shaft assembly and rack with light oil if required (039 & 040).



Quill Shaft



Rack

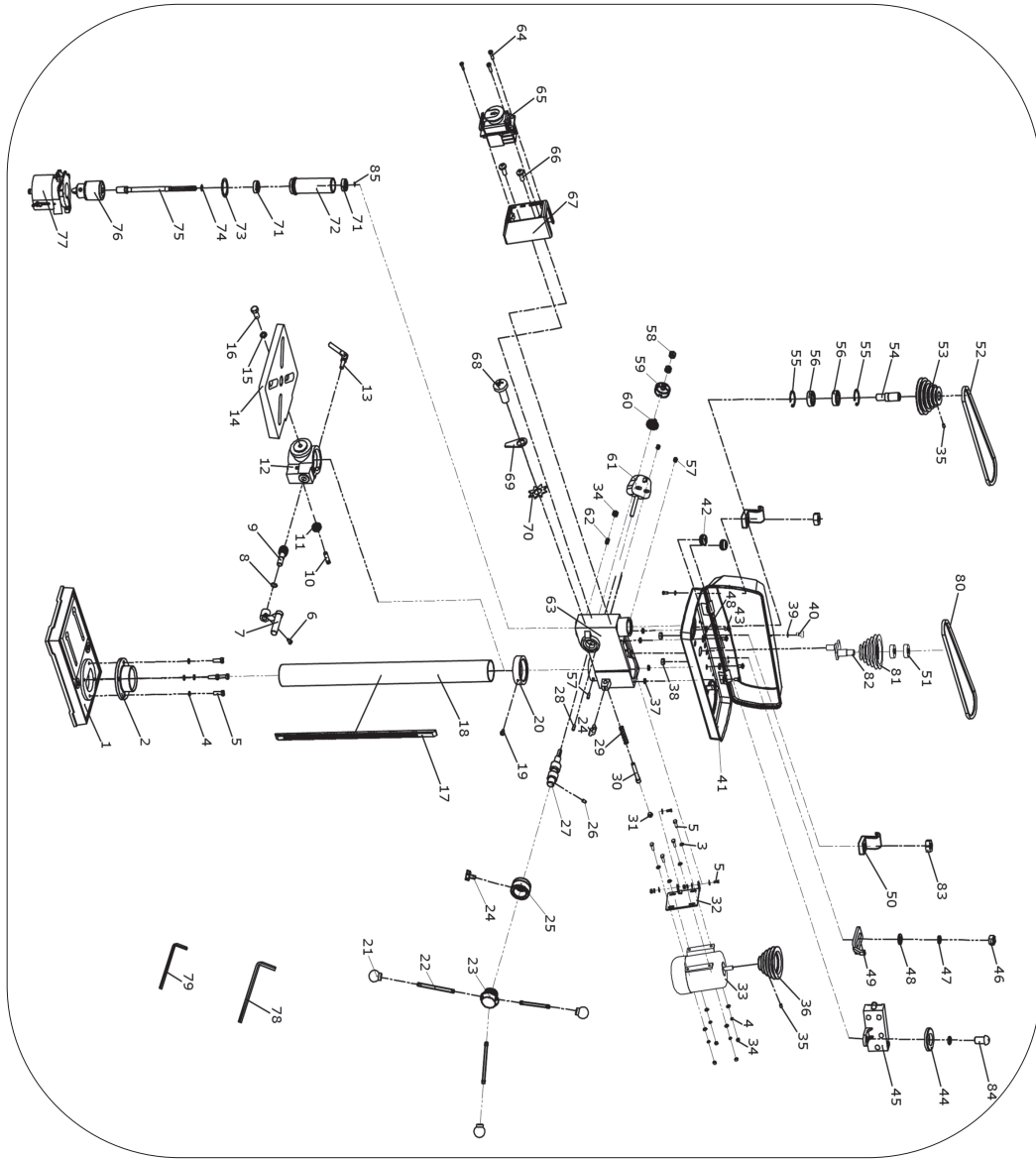
TROUBLESHOOTING

Problem	Probable Cause	Possible Solution
Noisy operation (under load).	<ul style="list-style-type: none"> • Incorrect belt tension. • Dry spindle. • Loose pulley. • Loose belt. • Worn bearing. 	<ul style="list-style-type: none"> • Adjust tension. • Remove spindle and quill assembly and lubricate. • Tighten pulley. • Adjust belt tension. • Replace bearing.
Excessive drill wobble.	<ul style="list-style-type: none"> • Loose chuck. • Worn spindle or bearing. • Worn chuck. • Bent drill bit. 	<ul style="list-style-type: none"> • Tighten by pressing chuck down on to a block of wood against the table. • Replace the spindle shaft or bearing. • Replace chuck. • Renew drill bit.
Motor won't start.	<ul style="list-style-type: none"> • Power supply. • Motor connection. • Switch connection faulty. • Faulty switch. • Motor windings burned. • Pulley cover not closed. • Microswitch on cover faulty. 	<ul style="list-style-type: none"> • Check mains lead/fuse. • Check motor connections. • Check switch connections. • Replace switch. • Replace motor. • Close pulley cover. • Check operation of micro-switch and renew/adjust as necessary.
Drill binds in workpiece.	<ul style="list-style-type: none"> • Excessive feed pressure. • Loose belt. • Loose drill. • Incorrect bit speed. • Drill angles incorrect for type of material. 	<ul style="list-style-type: none"> • Apply less pressure. • Check belt tension. • Tighten drill with key. • Adjust the drill speed reasonably. • Consult a technical manual dealing with materials drills and cutting angles and sharpen drill accordingly.
Drill bit burns or smokes.	<ul style="list-style-type: none"> • Incorrect speed. • Swarf is not discharging. • Dull drill or not proper clearance for material. • Needs coolant. • Excessive feed pressure. 	<ul style="list-style-type: none"> • Adjust drill speed accordingly. • Clean drill. • Check sharpness & taper. • Use coolant whilst drilling. • Apply less pressure.
Table difficult to raise.	<ul style="list-style-type: none"> • Needs lubrication. • Table lock tightened. 	<ul style="list-style-type: none"> • Lubricate with light oil. • Loosen clamp.

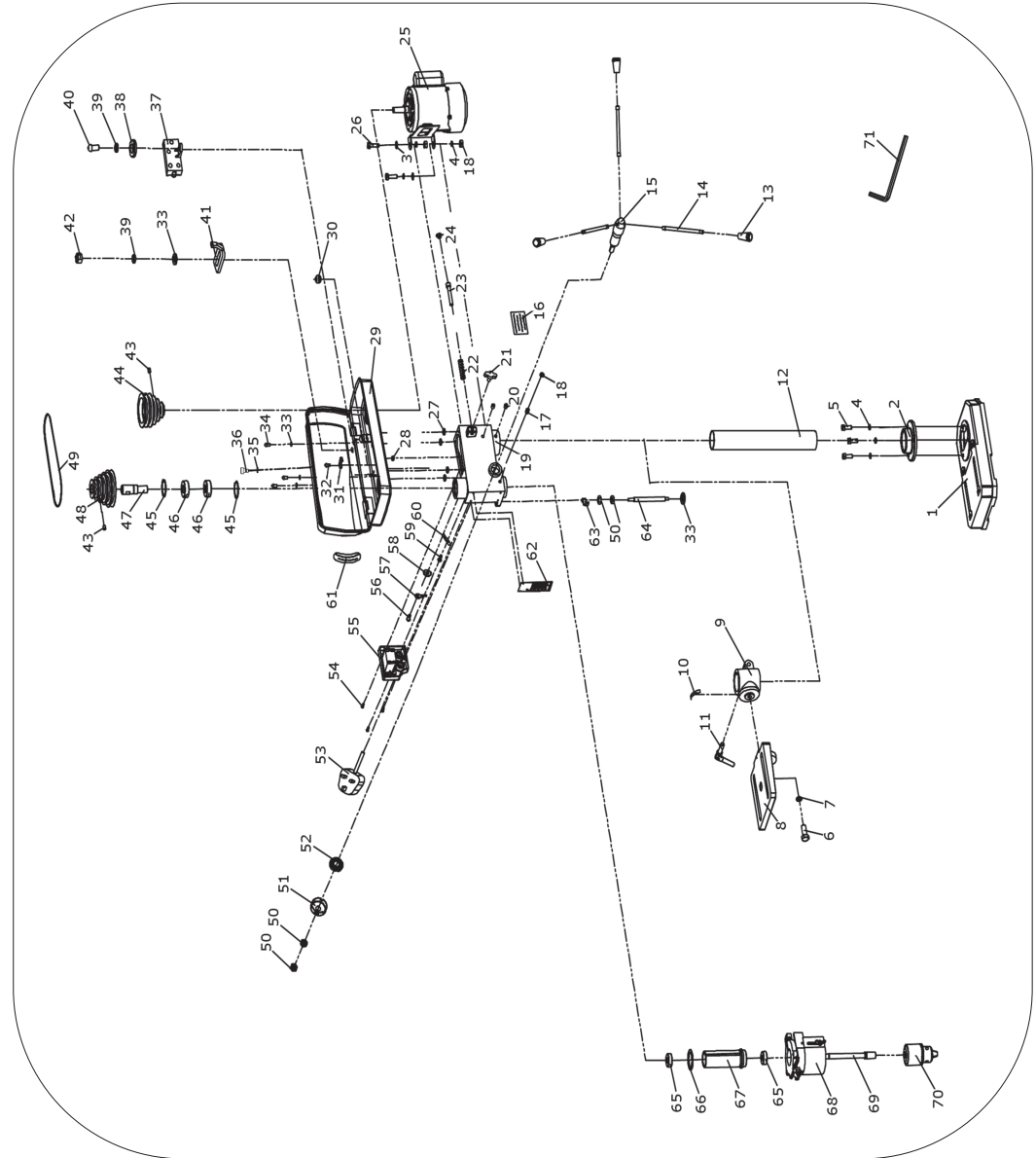
PARTS LIST - 01701

Ref. No.	Description	SIP Part No.	Ref. No.	Description	SIP Part No.
1.	Base	WD01-00738	34.	Nut M8	WD01-00687
2.	Column flange	WD01-00739	35.	Grub screw (M6 x 10)	WD01-00711
3.	Washer M8	WD01-00672	36.	Motor pulley	WD01-00766
4.	Spring washer M8	WD01-00673	37.	Washer	WD01-00767
5.	Bolt (M8 x 25)	WD01-00695	38.	Nut M5	WD01-00697
6.	Grub screw (M6 x 12)	WD01-00740	39.	Circlip	WD01-00704
7.	Crank handle	WD01-00741	40.	Knurled screw	WD01-00768
8.	Circlip	WD01-00742	41.	Pulley cover	WD01-00769
9.	Worm shaft	WD01-00743	42.	Protecting ring	WD01-00770
10.	Worm pin	WD01-00744	43.	Screw (M6 x 10)	WD01-00703
11.	Worm gear	WD01-00745	44.	Washer M6	WD01-00702
12.	Table support	WD01-00746	45.	Microswitch	WD01-00706
13.	Locking handle	WD01-00747	46.	Nut M6	WD01-00710
14.	Table	WD01-00748	47.	Spring washer M6	WD01-00707
15.	Spring washer M12	WD01-00676	48.	Washer M6	WD01-00702
16.	Bolt (M12 x 25)	WD01-00749	49.	Microswitch holder	WD01-00709
17.	Rack	WD01-00750	50.	Mains lead clamp	WD01-00700
18.	Column	WD01-00751	51.	Bearing 6202	WD01-00771
19.	Grub screw (M6 x 12)	WD01-00740	52.	Belt O-450	WD01-00772
20.	Rack collar	WD01-00752	53.	Spindle pulley	WD01-00773
21.	Handle knob	WD01-00753	54.	Spindle shaft	WD01-00774
22.	Handle	WD01-00754	55.	Circlip	WD01-00713
23.	Handle base	WD01-00755	56.	Bearing 6203	WD01-00714
24.	Locking handle	WD01-00756	57.	Screw (M8 x 8)	WD01-00775
25.	Scale	WD01-00757	58.	Nut M10	WD01-00717
26.	Roll pin (6 x 12)	WD01-00758	59.	Spring cover	WD01-00776
27.	Pinion shaft	WD01-00759	60.	Tension spring	WD01-00777
28.	Roll pin (6 x 18)	WD01-00760	61.	Mains lead	WD01-00720
29.	Motor spring	WD01-00761	62.	Screw (M8 x 15)	WD01-00779
30.	Motor push rod	WD01-00762	63.	Casting	WD01-00780
31.	Washer	WD01-00763	64.	Screw (ST2.9 x 12)	WD01-00781
32.	Motor plate	WD01-00764	65.	Switch	WD01-00782
33.	Motor	WD01-00765	66.	Screw (M4 x 10)	WD01-00783

EXPLODED DRAWING - 01701



EXPLODED DRAWING - 01700



PARTS LIST - 01700

Ref. No.	Description	SIP Part No.	Ref. No.	Description	SIP Part No.
1.	Base	WD01-00670	34.	Screw (M6 x 10)	WD01-00703
2.	Column flange	WD01-00671	35.	Circlip	WD01-00704
3.	Washer 8mm	WD01-00672	36.	Knurled screw	WD01-00705
4.	Spring washer 8mm	WD01-00673	37.	Microswitch	WD01-00706
5.	Bolt (M8 x 20)	WD01-00674	38.	Washer 6mm	WD01-00702
6.	Bolt (M12 x 30)	WD01-00675	39.	Spring washer 6mm	WD01-00707
7.	Spring washer 12mm	WD01-00676	40.	Screw (M6 x 16)	WD01-00708
8.	Table	WD01-00677	41.	Microswitch holder	WD01-00709
9.	Table support	WD01-00678	42.	Nut M6	WD01-00710
10.	Angle label	WD01-00679	43.	Grub screw (M6 x 10)	WD01-00711
11.	Locking handle	WD01-00680	44.	Motor pulley	WD01-00712
12.	Column	WD01-00681	45.	Circlip	WD01-00713
13.	Handle knob	WD01-00682	46.	Bearing	WD01-00714
14.	Handle	WD01-00683	47.	Spindle shaft	WD01-00715
15.	Handle shaft	WD01-00684	48.	Spindle pulley	WD01-00716
16.	Warning label	WD01-00685	49.	Belt K630	18090
17.	Screw (M8 x 16)	WD01-00686	50.	Nut M10	WD01-00717
18.	Nut M8	WD01-00687	51.	Spring cover	WD01-00718
19.	Castling	WD01-00688	52.	Spring	WD01-00719
20.	Grub screw (M8 x 20)	WD01-00689	53.	Mains lead	WD01-00720
21.	Knob	WD01-00690	54.	Screw (M4 x 12)	WD01-00721
22.	Motor spring	WD01-00691	55.	Switch	WD01-00722
23.	Motor push rod	WD01-00692	56.	Screw (M4 x 6)	WD01-00723
24.	Washer	WD01-00693	57.	Clip	WD01-00724
25.	Motor	WD01-00694	58.	Lock washer	WD01-00725
26.	Bolt (M8 x 25)	WD01-00695	59.	Screw (M5 x 10)	WD01-00726
27.	Washer	WD01-00696	60.	Mains lead clamp	WD01-00700
28.	Nut M5	WD01-00697	61.	Label	WD01-00728
29.	Pulley cover	WD01-00698	62.	Label	WD01-00729
30.	Protecting ring	WD01-00699	63.	Indicator	WD01-00730
31.	Mains lead clamp	WD01-00700	64.	Limit bolt	WD01-00731
32.	Screw (M5 x 12)	WD01-00701	65.	Bearing 6201	WD01-00732
33.	Washer 6mm	WD01-00702	66.	Washer	WD01-00733

PARTS LIST - 01700...cont

Ref. No.	Description	SIP Part No.	Ref. No.	Description	SIP Part No.
67.	Quill	WD01-00734	70.	Chuck	WD01-00736
68.	Chuck guard 40mm	66609	71.	Hex. Wrench 4mm	WD01-00737
69.	Spindle	WD01-00735			