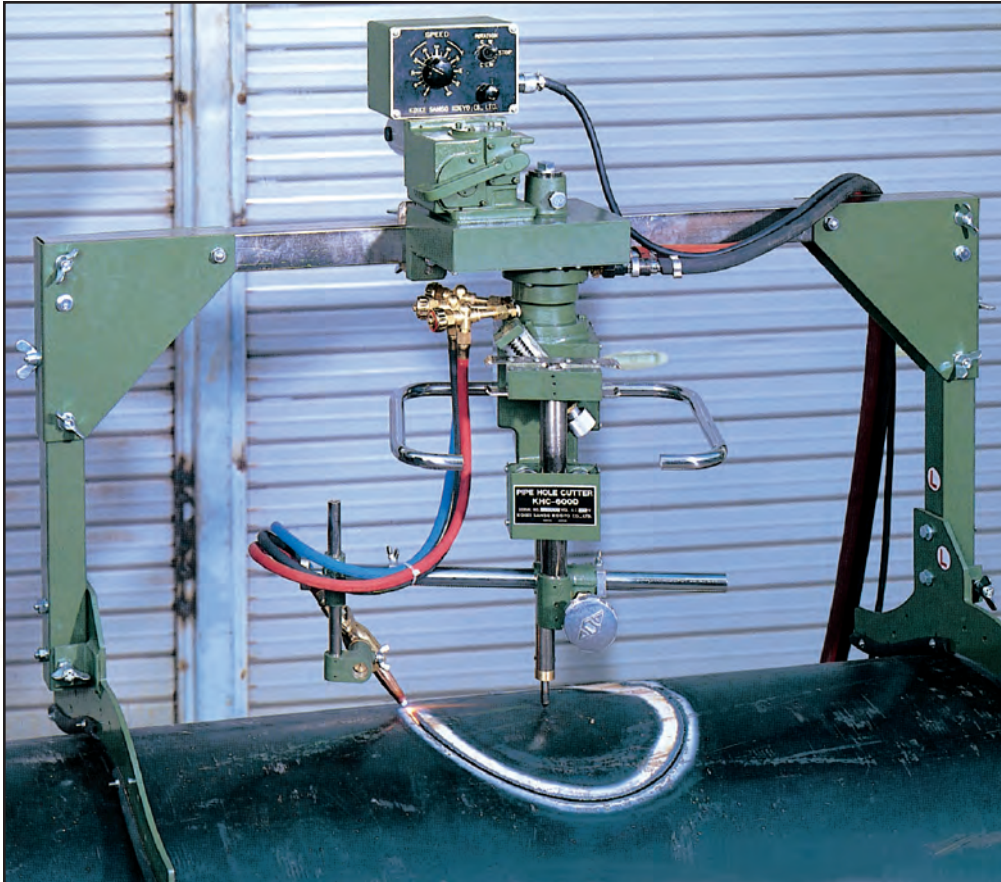


KHC-600D

Portable Pipe Hole Cutting Machine



Precise and Easy Automatic Pipe Hole Cutting

This unique KHC-600D from Koike Aronson is ideally suited for cutting high precision T-joint circles including any hole that crosses the side of the pipe for piping systems, high pressure vessels and heat exchangers.

Developed with Koike Advanced Technology, the KHC-600D is a compact design that is light weight and easy to operate. In addition to cutting circles and bevel in flat plate, the machine can cut a vessel from the inside or outside.

Features & Benefits

- **Automatic Oxy Fuel Pipe Hole Cutter**
Automatically bevel cuts or straight cuts holes into pipe
- **H-Lever Handle**
Torch automatically maintains tip to work distance based on trigonometry function of H- Lever; very easy to set up with just two adjustments
- **Rotating Gas Manifold**
Keeps hoses from becoming tangled
- **Automatic Tip Stand Off**
Ensures higher accuracy during bevel cutting
- **On/Off Drive Clutch**
Position cutting tip accurately and quickly
- **Flat Circle Cutting**
Can be used to cut circles on flat plate
- **High Quality Tips**
Koike's superior design Series 100 torch tips are included to ensure fast, smooth cuts
- **Optional Snap Valve**
One-touch on/off gas valve

Specifications

KHC600D-2000-0305



KHC-600D

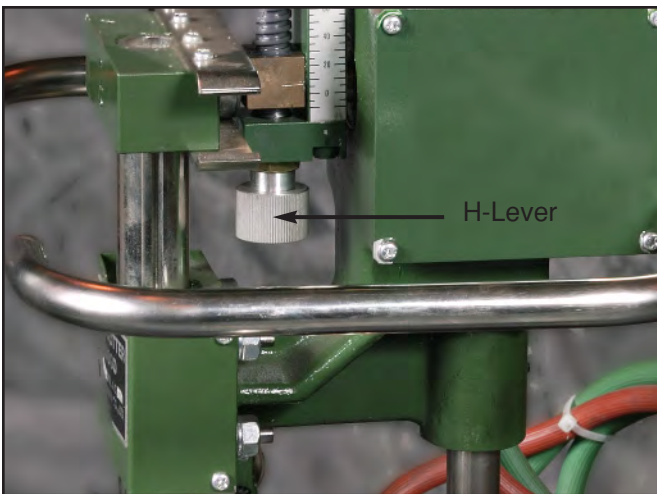
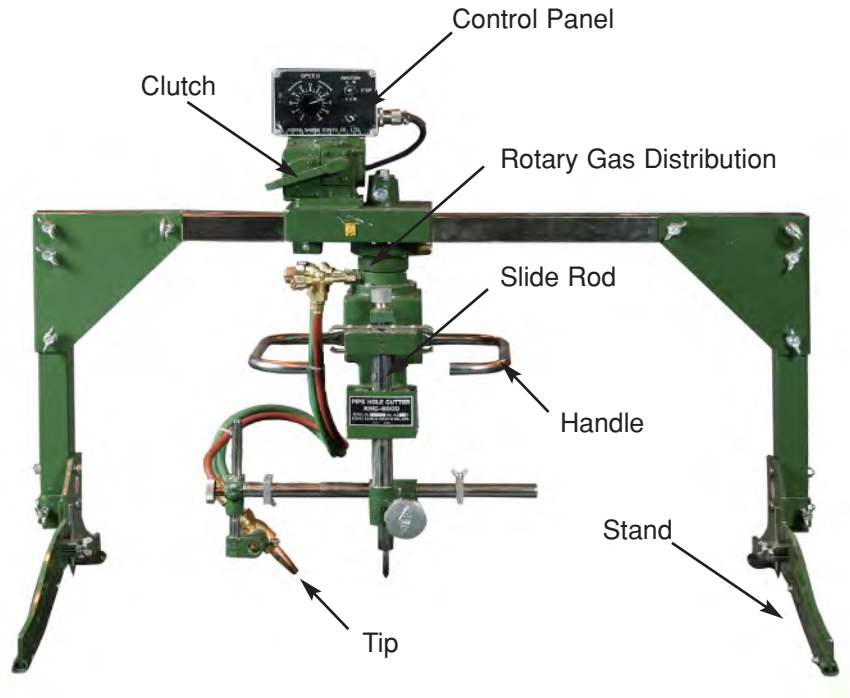
Portable Pipe Hole Cutting Machine

SPECIFICATIONS

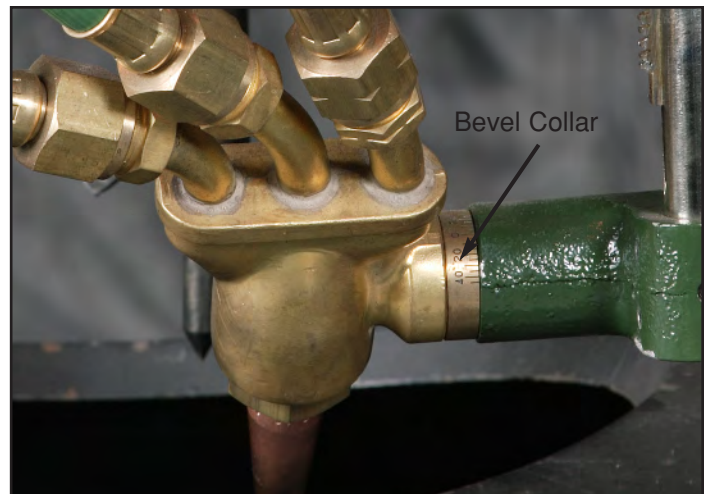
Dimensions	760mm[H] x 1050mm[L] x 500mm[W] (30 x 41 x 19in)
Effective Cutting Diameter	80-600mm (3 ¹ / ₈ -23in)
Main Pipe Diameter	Over 800mm (32in)
Vertical Torch Stroke	0-100mm (0-4in)
Cutting Speed	0.12-1.2 rpm
Cutting Thickness	5-30mm (1/4 - 1 ¹ / ₄ in)
Speed Control	PWM control system
Motor	15W 5,000 rpm DC
Power Source	AC 120V
Weight	26 kg (57.2 lbs)
Bevel Angle	0 to 45°
Ratio Between Branch and Main Pipe Diameters	1:2 or more

MODELS

Description	Part #
(1) KHC-600D	ZA420-3010
(3) Cutting Tips - 102 for Acetylene, 106 for LPG	Koike 100 series
Optional Snap Valve	SNAPVALVEIII



The H-Lever allows the torch to travel automatically up and down by adjusting the tip height at 0° (upper position of the pipe) and 90° (pipe side).



The Bevel Collar...



KOIKE ARONSON, INC.

Main Office:
635 W. Main St., P.O. Box 307
Arcade, NY 14009
Phone (585) 492-2400 Fax (585) 457-3517

Visit us at www.koike.com



ISO 9001
JQA-2093
Koike Techno Center Products